

Results for LC 7, PP-FY

Arriostro Ingenieros

Mario Rojas Bravo

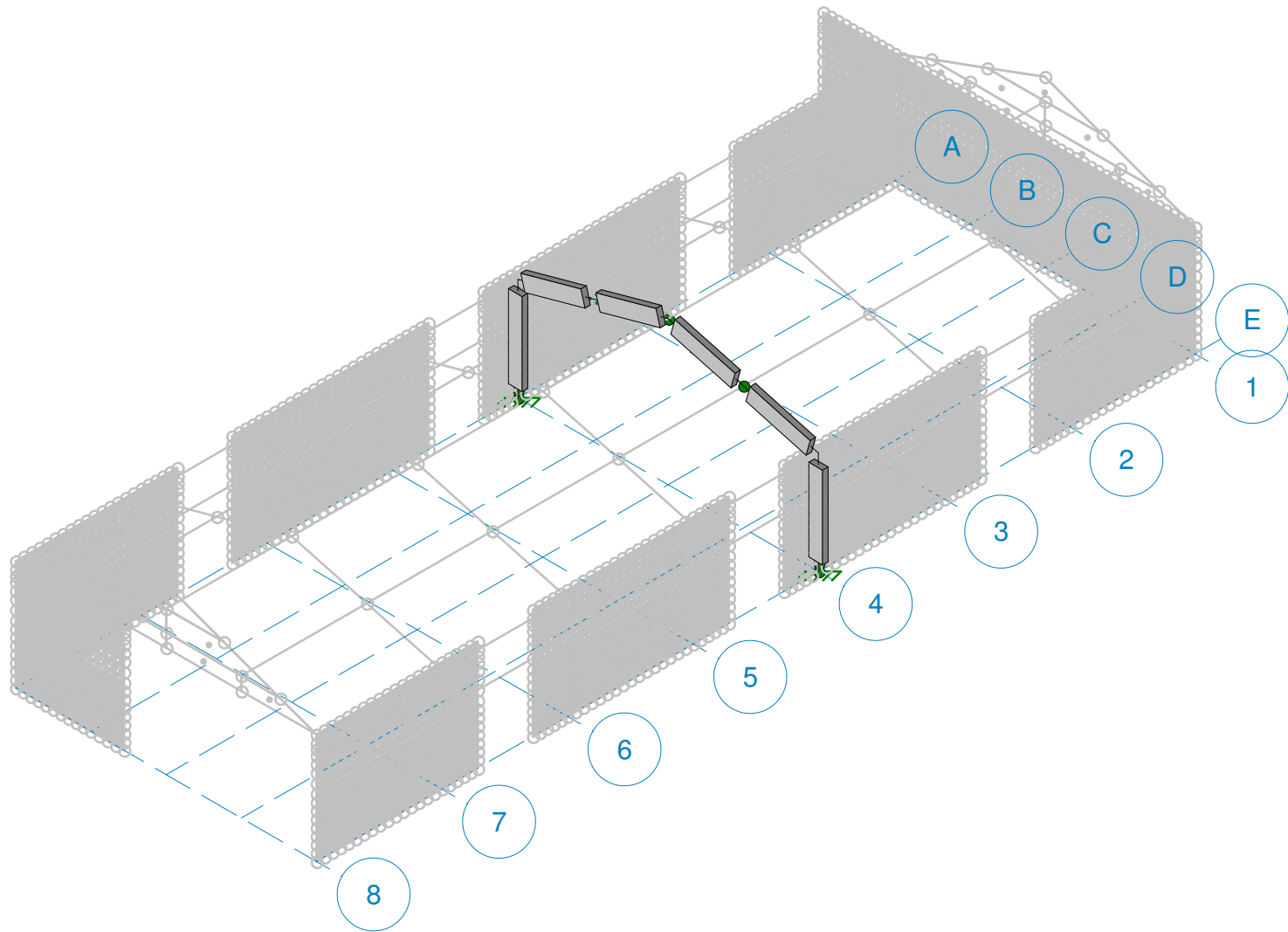
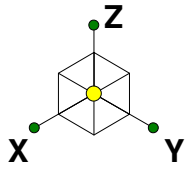
Ultraestación Chillán

Nave Típica

1

Mar 3, 2021 at 3:56 PM

Ultraestación Chillán.r3d



Results for LC 7, PP-FY

Arriostro Ingenieros

Mario Rojas Bravo

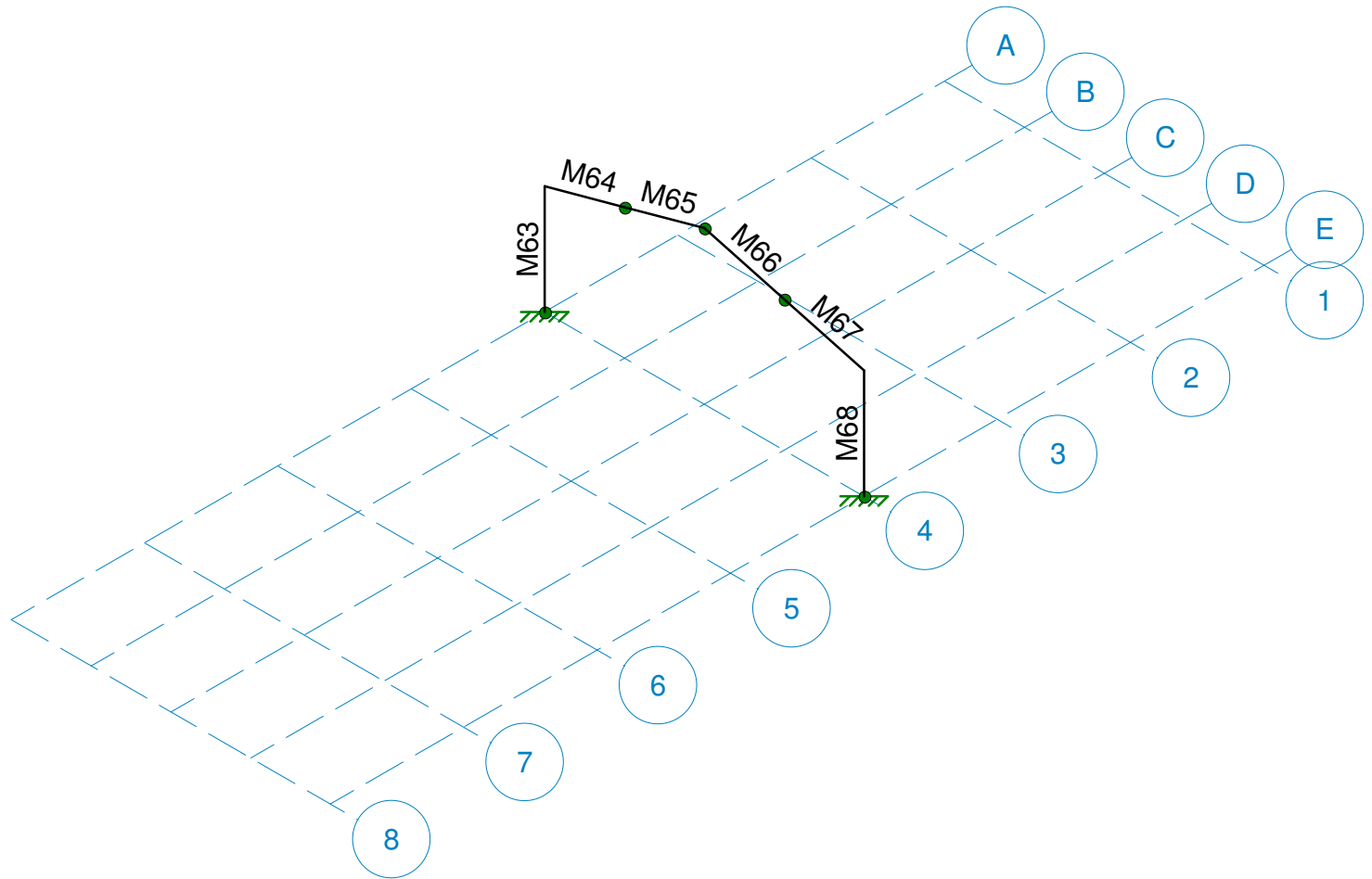
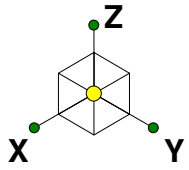
Ultraestación Chillán

Marco Típico

2

Mar 3, 2021 at 3:58 PM

Ultraestación Chillán.r3d



Results for LC 7, PP-FY

Arriostro Ingenieros

Mario Rojas Bravo

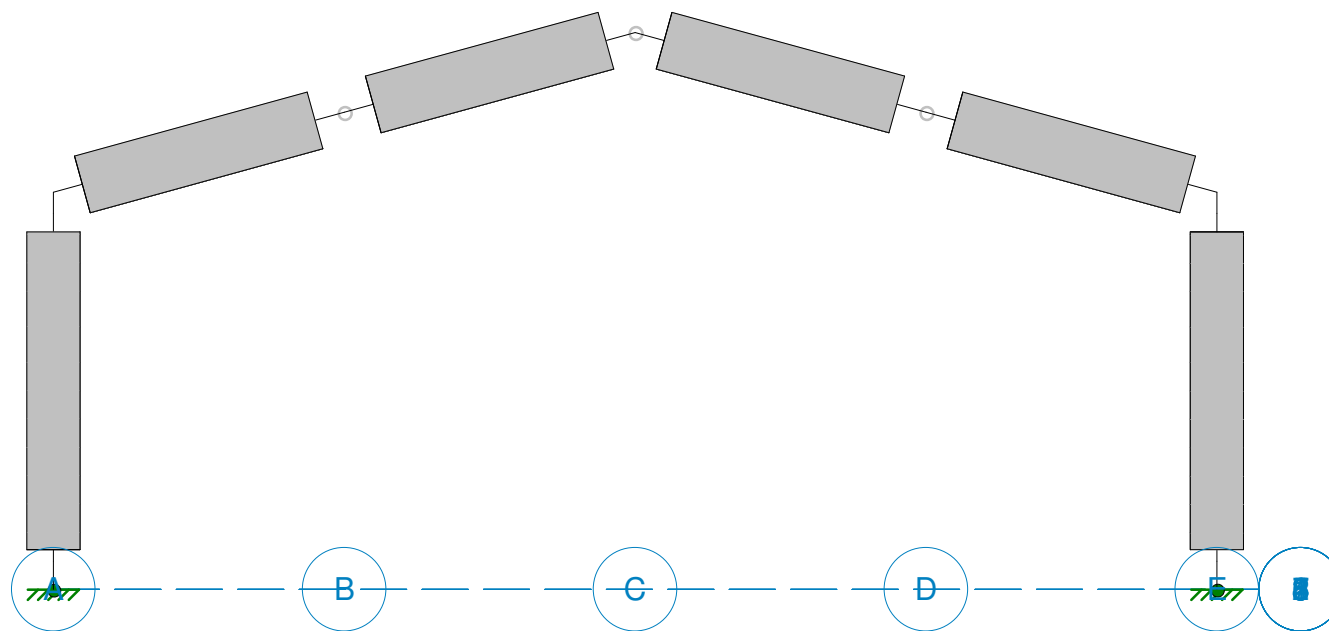
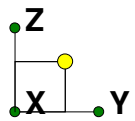
Ultraestación Chillán

Marco Típico

3

Mar 3, 2021 at 3:59 PM

Ultraestación Chillán.r3d



Results for LC 7, PP-FY

Arriostro Ingenieros

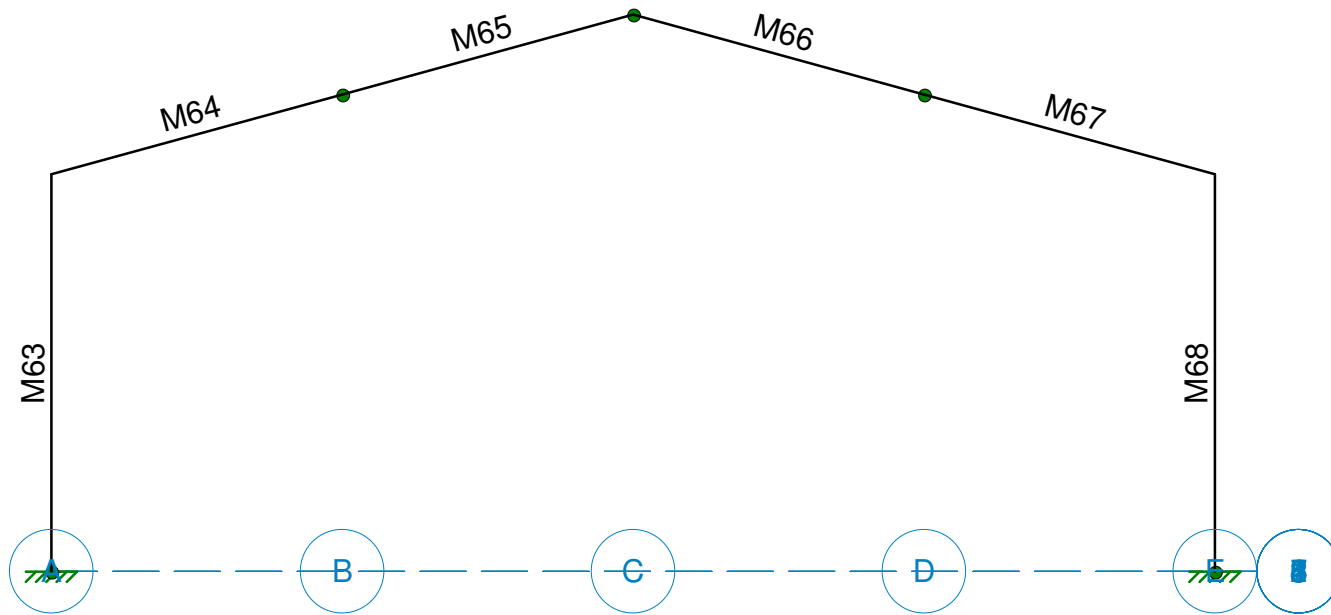
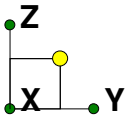
Mario Rojas Bravo

Ultraestación Chillán  
Marco Típico

4

Mar 3, 2021 at 4:01 PM

Ultraestación Chillán.r3d



Results for LC 7, PP-FY

Arriostro Ingenieros

Mario Rojas Bravo

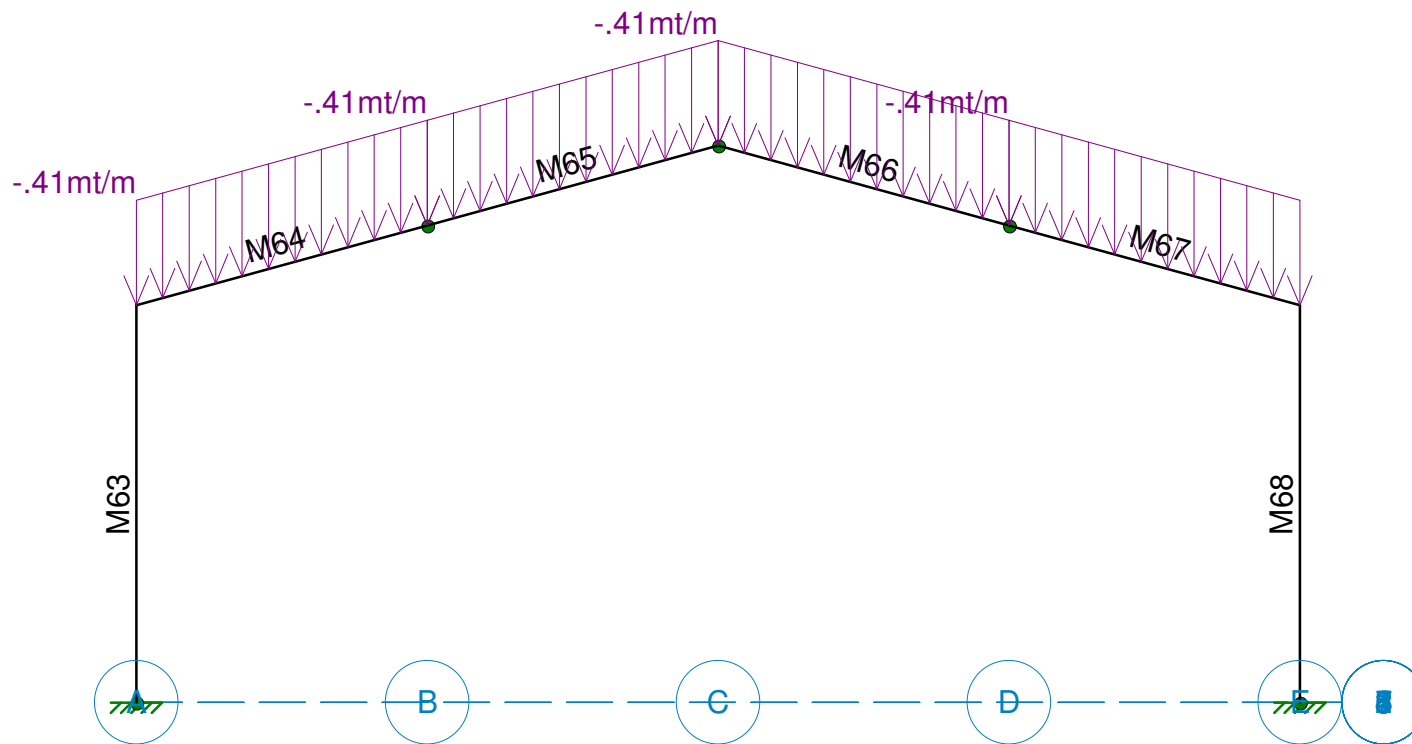
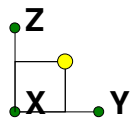
Ultraestación Chillán

Marco Típico

5

Mar 3, 2021 at 4:01 PM

Ultraestación Chillán.r3d



Loads: BLC 1, PP  
Results for LC 7, PP-FY

Arriostro Ingenieros

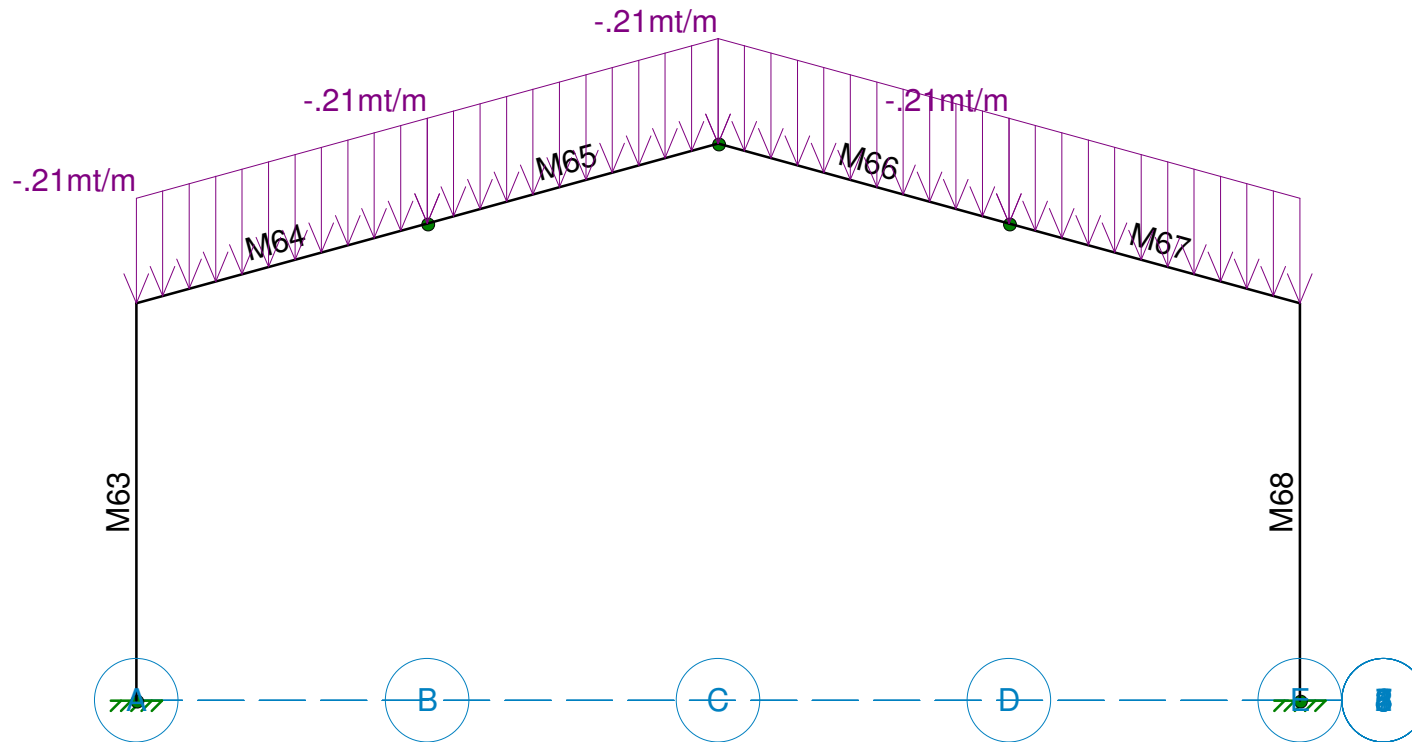
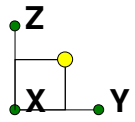
Mario Rojas Bravo

Ultraestación Chillán  
Marco Típico - PP Techo

6

Mar 3, 2021 at 4:02 PM

Ultraestación Chillán.r3d



Loads: BLC 2, SC  
Results for LC 7, PP-FY

Arriostro Ingenieros

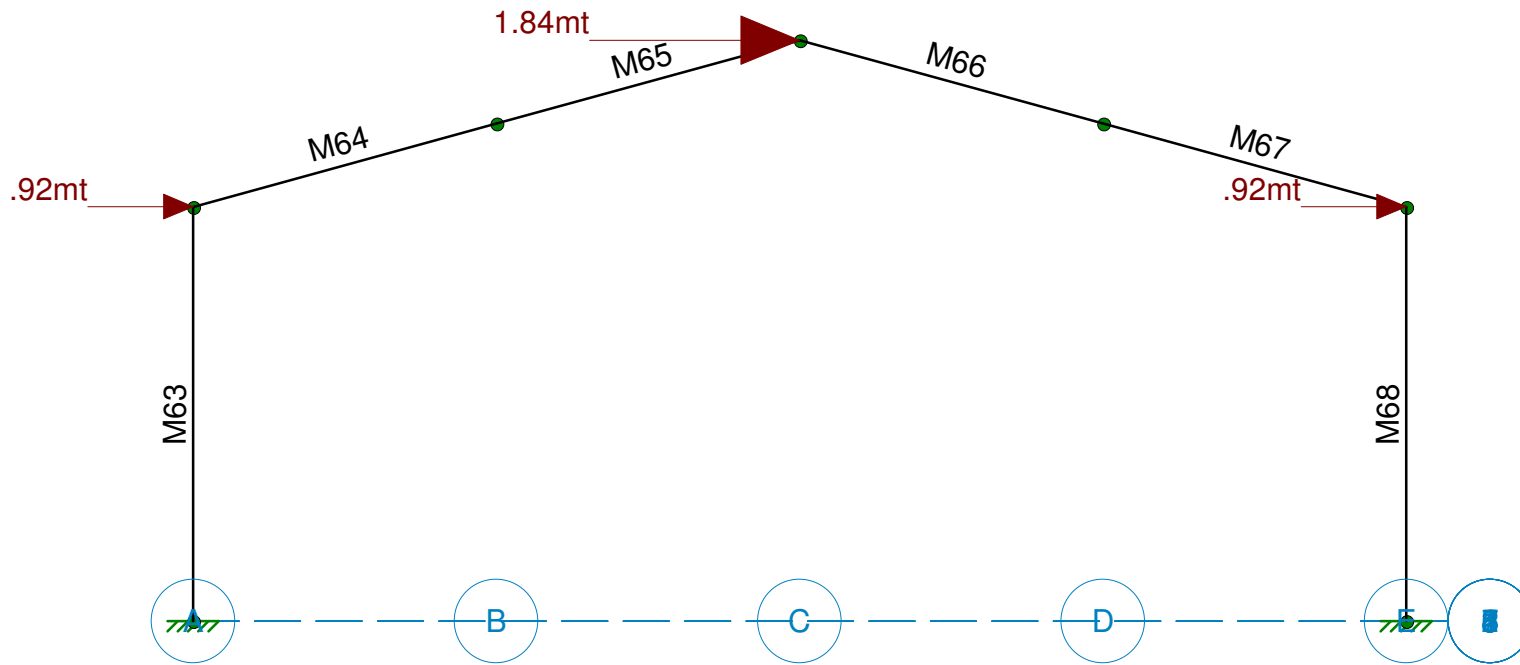
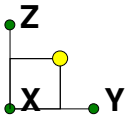
Mario Rojas Bravo

Ultraestación Chillán  
Marco Típico - SC Techo

7

Mar 3, 2021 at 4:03 PM

Ultraestación Chillán.r3d



Loads: BLC 4, SY

Arriostro Ingenieros

Mario Rojas Bravo

Ultraestación Chillán

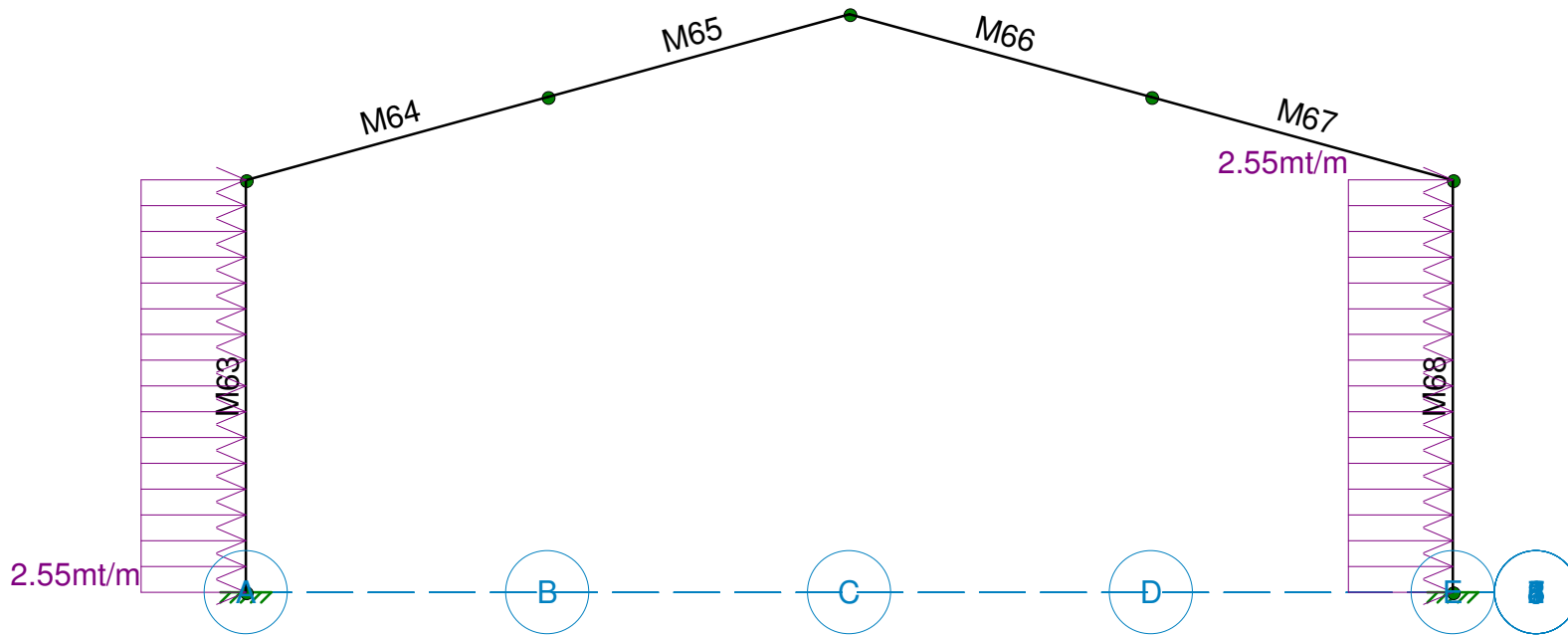
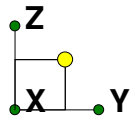
Marco Típico - Carga Sísmica Techo

8

Mar 3, 2021 at 4:06 PM

Ultraestación Chillán.r3d





Loads: BLC 4, SY

Arriostro Ingenieros

Mario Rojas Bravo

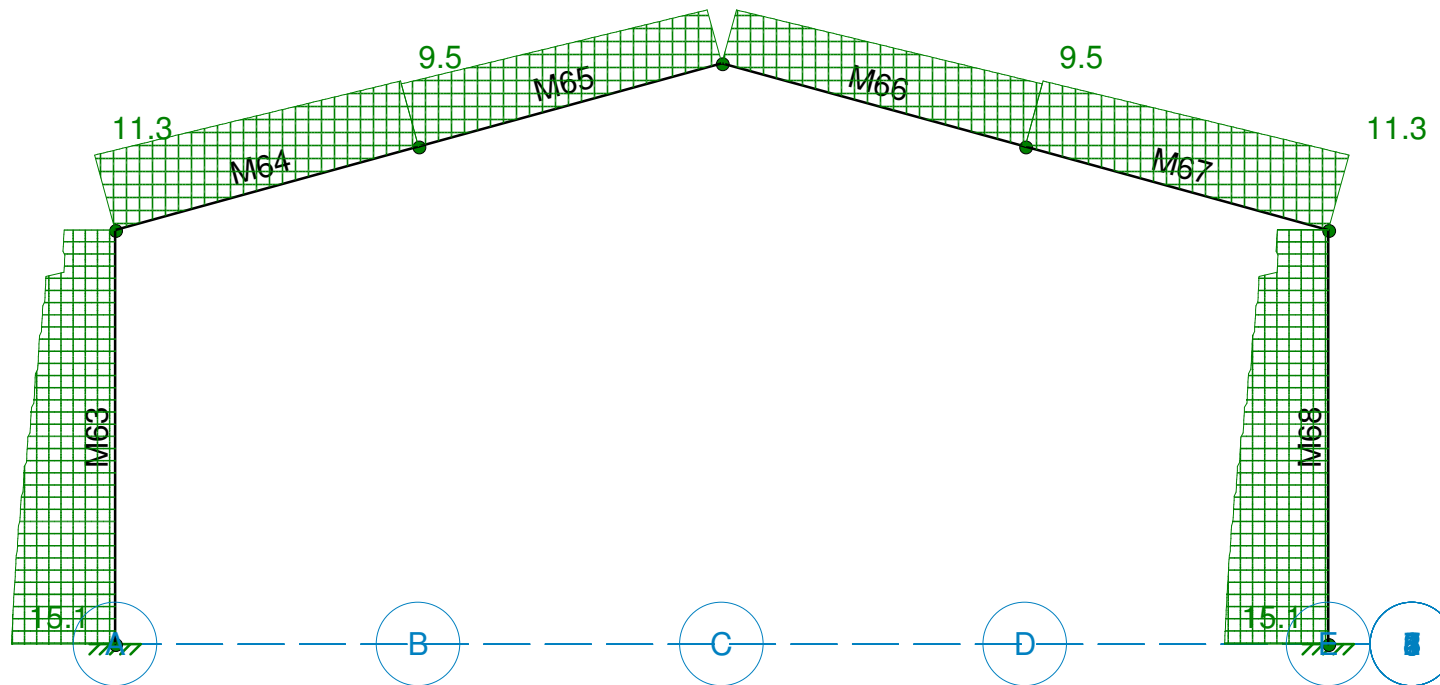
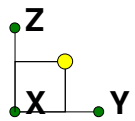
Ultraestación Chillán

Marco Típico - Carga Sísmica Muros

9

Mar 3, 2021 at 4:07 PM

Ultraestación Chillán.r3d



Results for LC 3, PP+SC  
Member Axial Forces (mt)

Arriostro Ingenieros

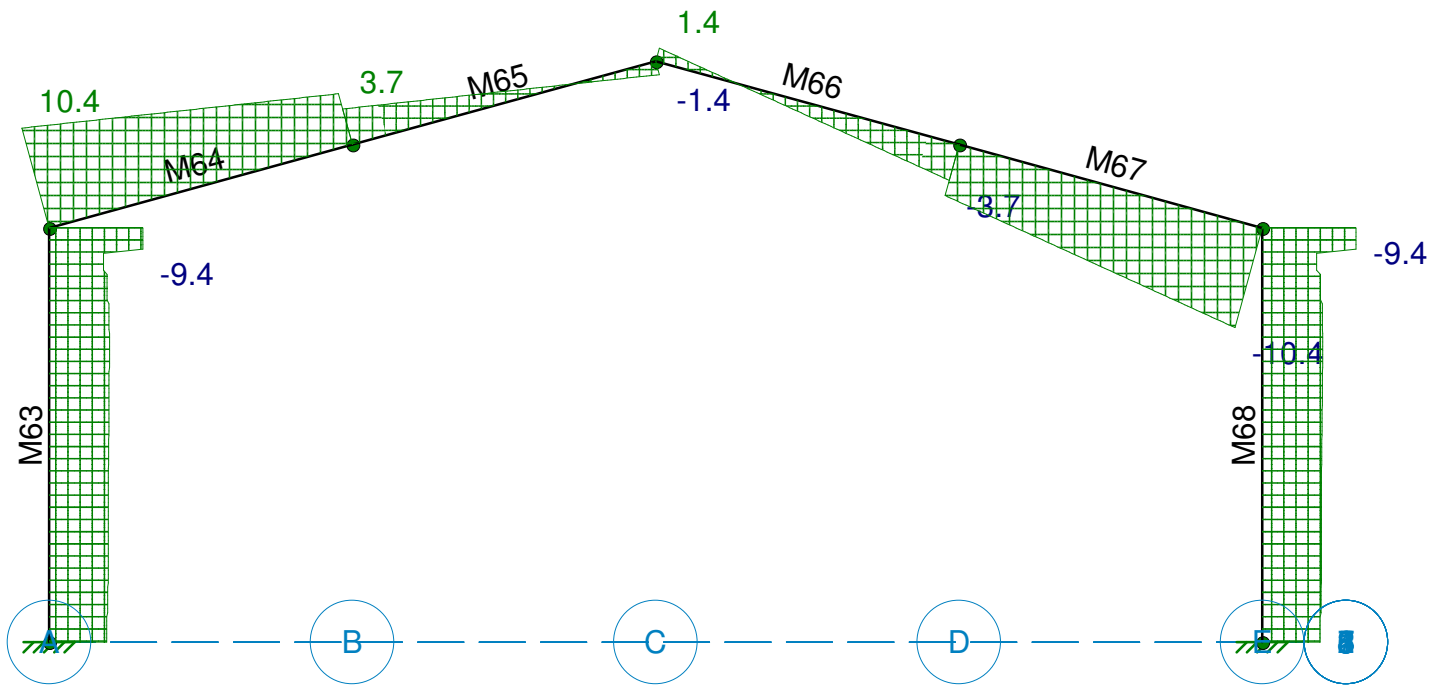
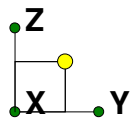
Mario Rojas Bravo

Ultraestación Chillán  
Marco Típico - Carga Axial (PP+SC)

10

Mar 3, 2021 at 4:10 PM

Ultraestación Chillán.r3d



Results for LC 3, PP+SC  
Member y Shear Forces (mt)

Arriostra Ingenieros

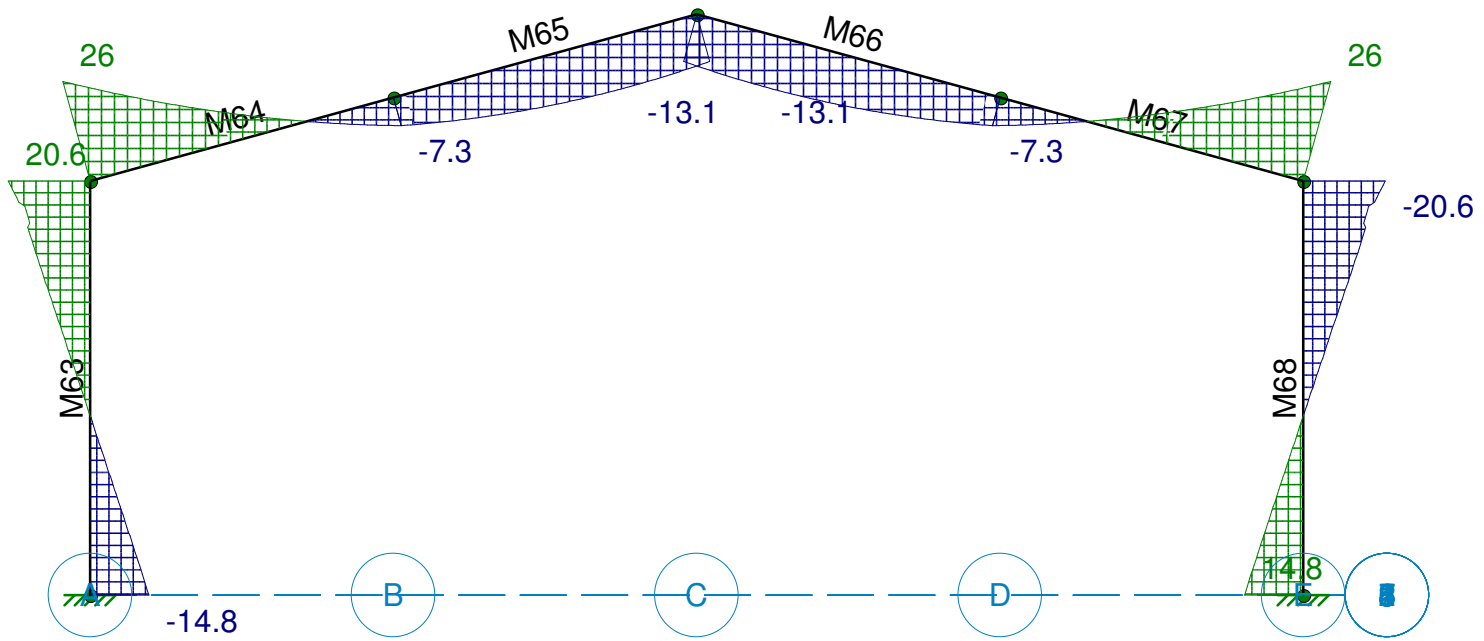
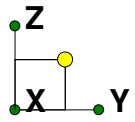
Mario Rojas Bravo

Ultraestación Chillán  
Marco Típico - Corte (PP+SC)

11

Mar 3, 2021 at 4:12 PM

Ultraestación Chillán.r3d



Results for LC 3, PP+SC  
Member z Bending Moments (mt-m)

Arriostro Ingenieros

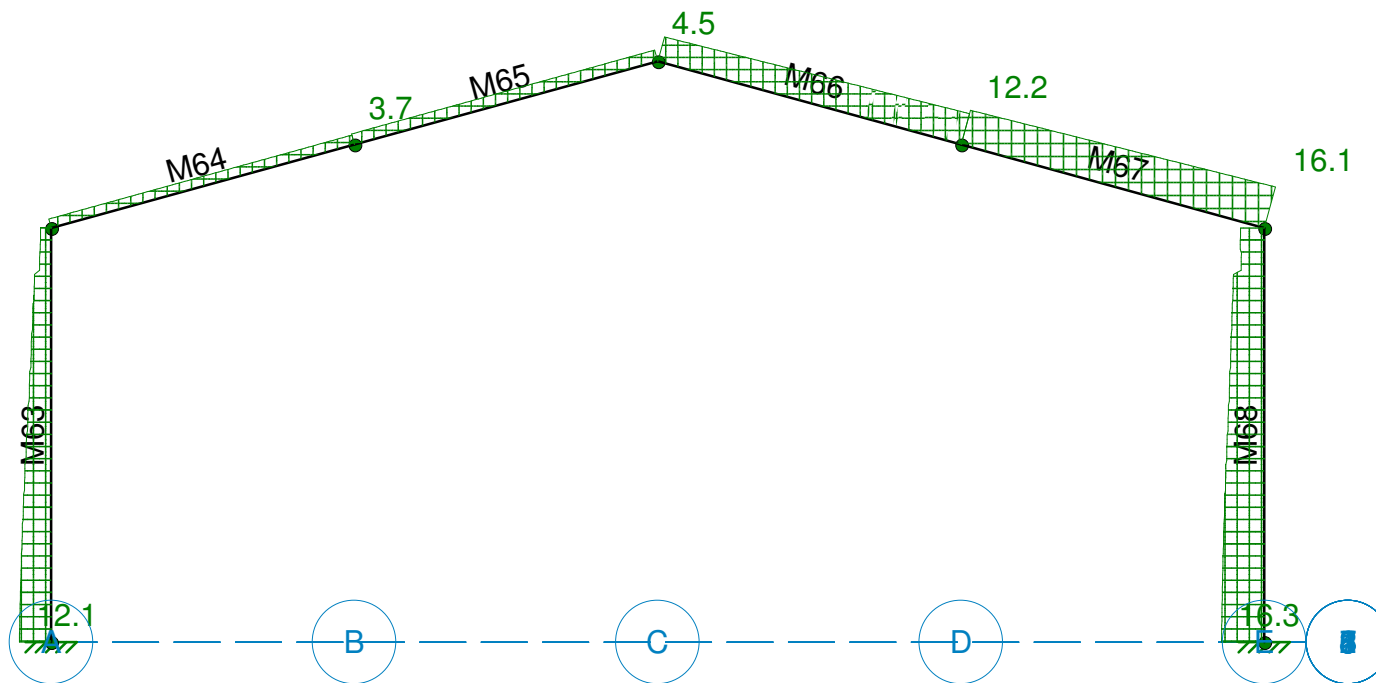
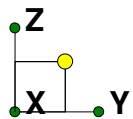
Mario Rojas Bravo

Ultraestación Chillán  
Marco Típico - Momento (PP+SC)

12

Mar 3, 2021 at 4:13 PM

Ultraestación Chillán.r3d



Results for LC 5, PP+FY  
Member Axial Forces (mt)

Arriostra Ingenieros

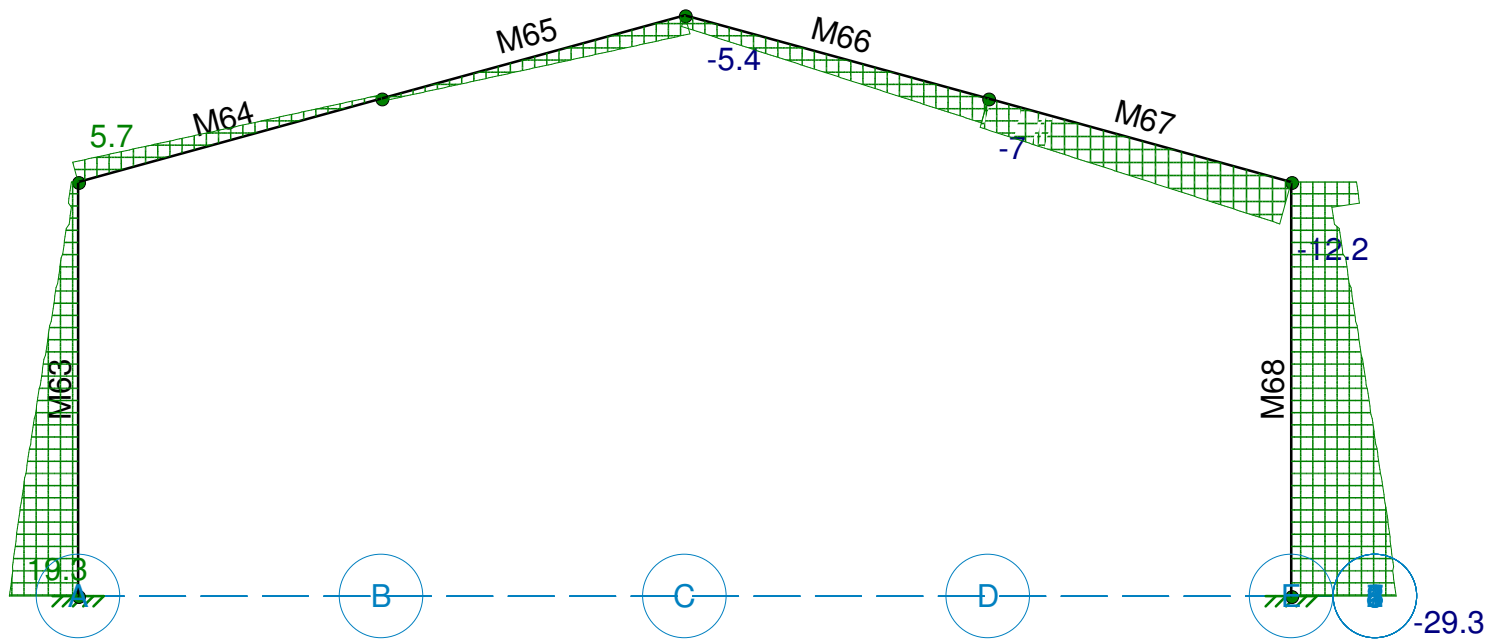
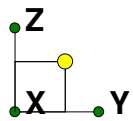
Mario Rojas Bravo

Ultraestación Chillán  
Marco Típico - Carga Axial (PP+FY)

20

Mar 3, 2021 at 4:15 PM

Ultraestación Chillán.r3d



Results for LC 5, PP+FY  
Member y Shear Forces (mt)

Arriostra Ingenieros

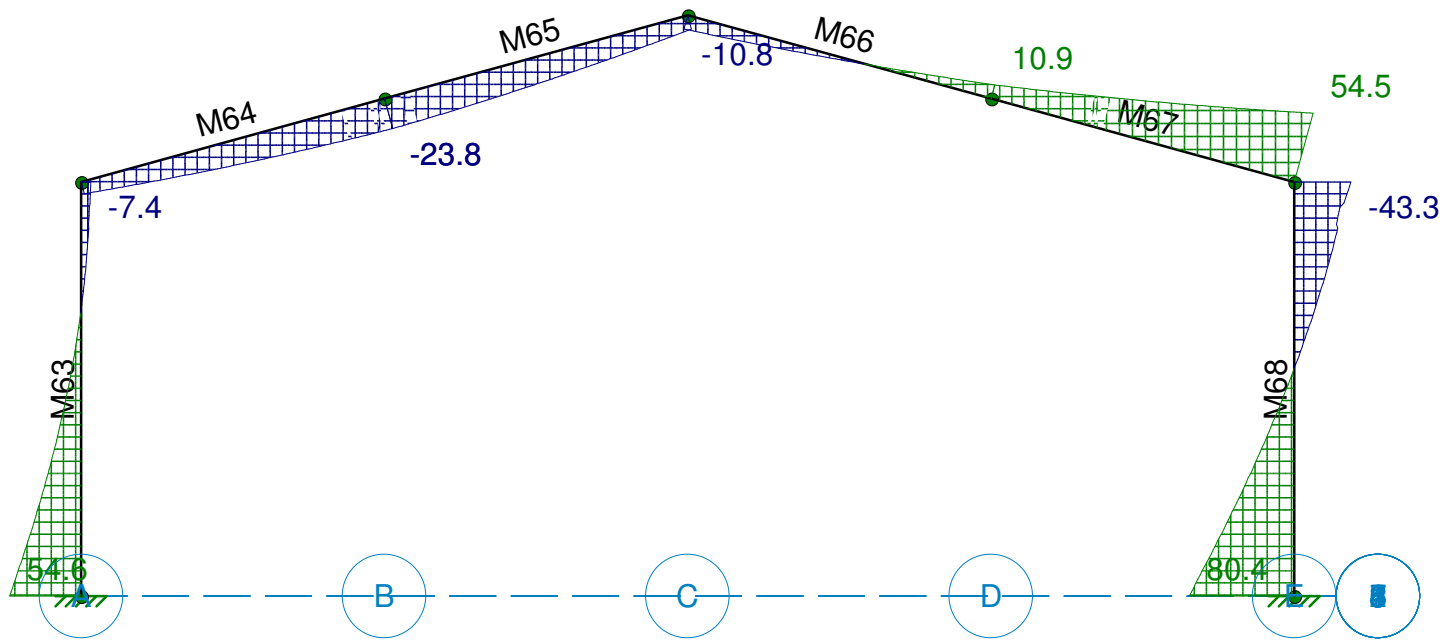
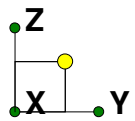
Mario Rojas Bravo

Ultraestación Chillán  
Marco Típico - Corte (PP+FY)

21

Mar 3, 2021 at 4:16 PM

Ultraestación Chillán.r3d



Results for LC 5, PP+FY  
Member z Bending Moments (mt-m)

Arriostro Ingenieros

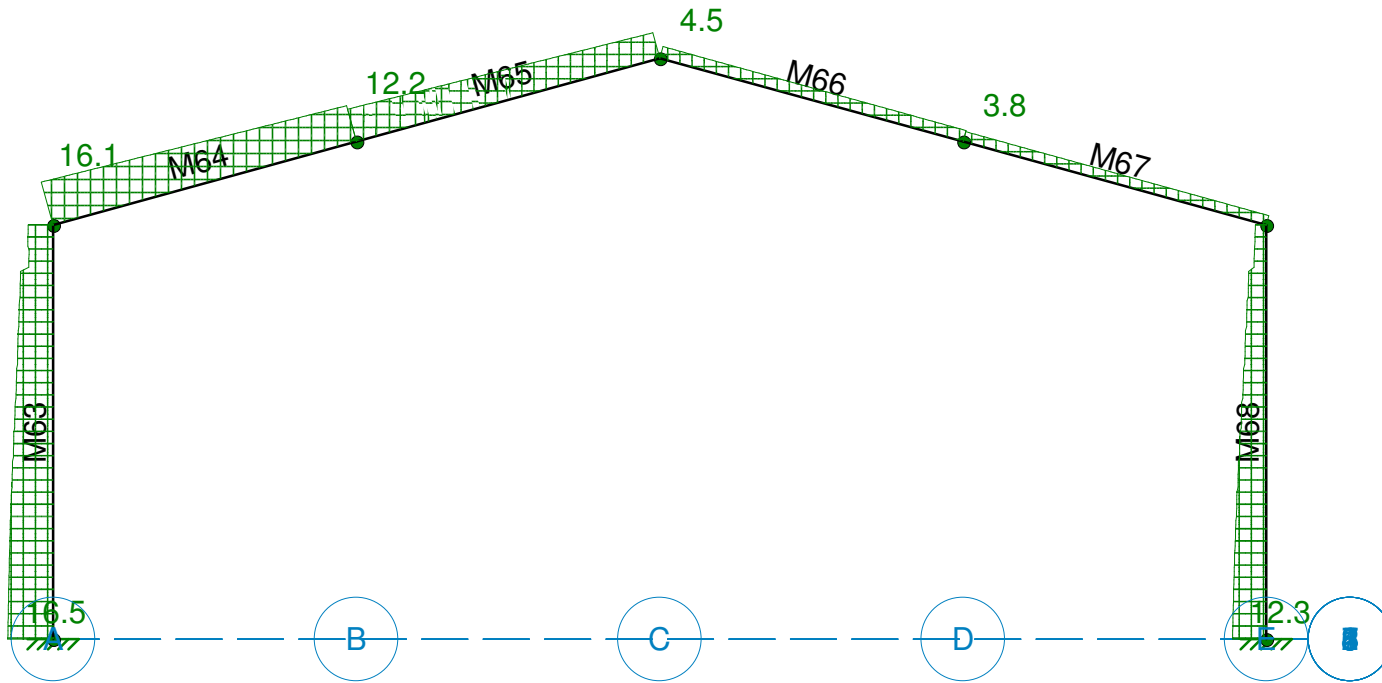
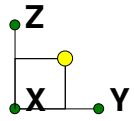
Mario Rojas Bravo

Ultraestación Chillán  
Marco Típico - Momento (PP+FY)

22

Mar 3, 2021 at 4:16 PM

Ultraestación Chillán.r3d



Results for LC 7, PP-FY  
Member Axial Forces (mt)

Arriostro Ingenieros

Mario Rojas Bravo

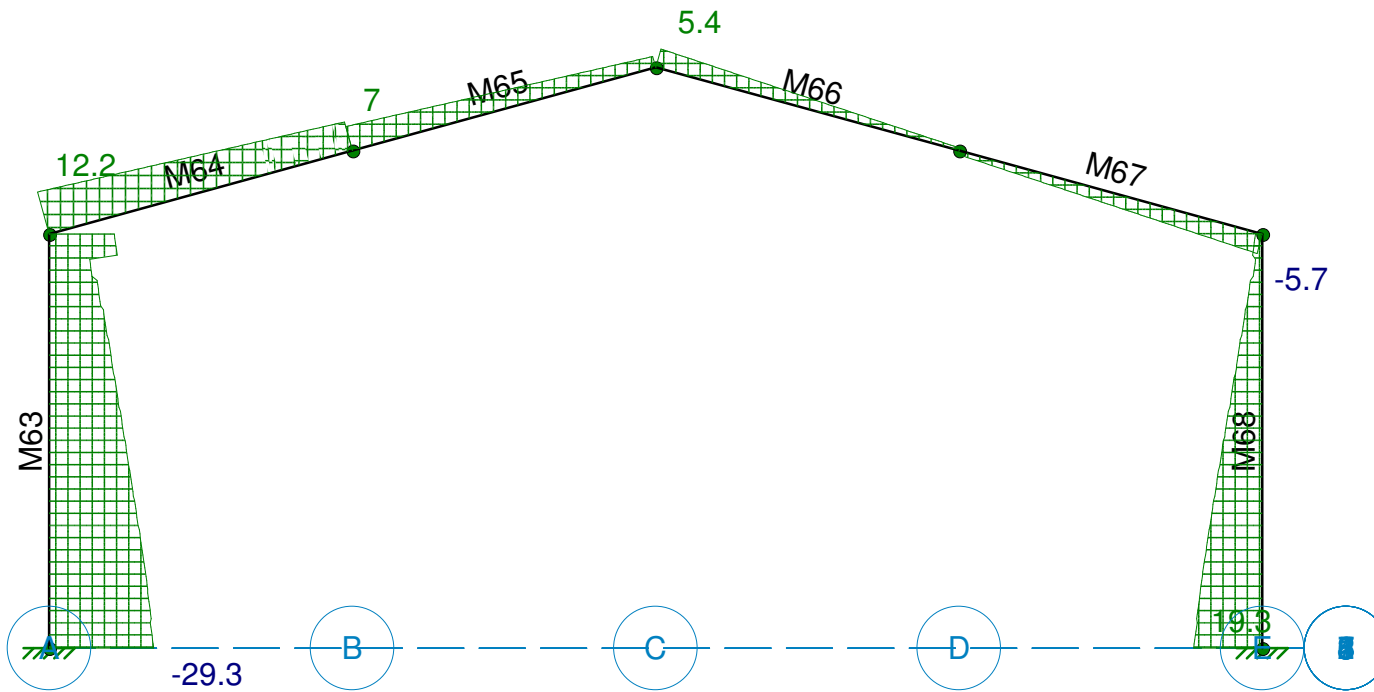
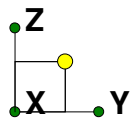
Ultraestación Chillán  
Marco Típico - Carga Axial (PP-FY)

30

Mar 3, 2021 at 4:17 PM

Ultraestación Chillán.r3d





Results for LC 7, PP-FY  
Member y Shear Forces (mt)

Arriostro Ingenieros

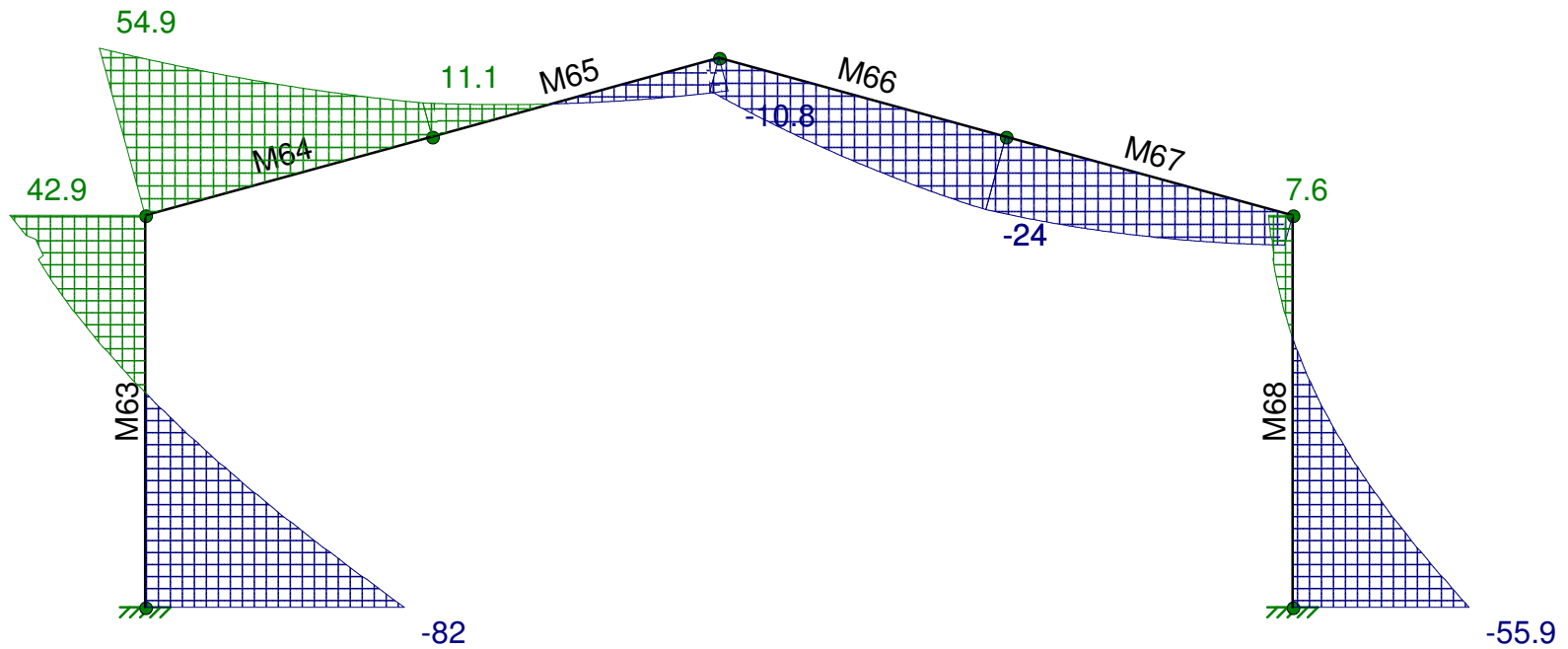
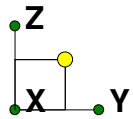
Mario Rojas Bravo

Ultraestación Chillán  
Marco Típico - Corte (PP-FY)

31

Mar 3, 2021 at 4:18 PM

Ultraestación Chillán.r3d



Results for LC 7, PP-FY  
Member z Bending Moments (mt-m)

Arriostro Ingenieros

Mario Rojas Bravo

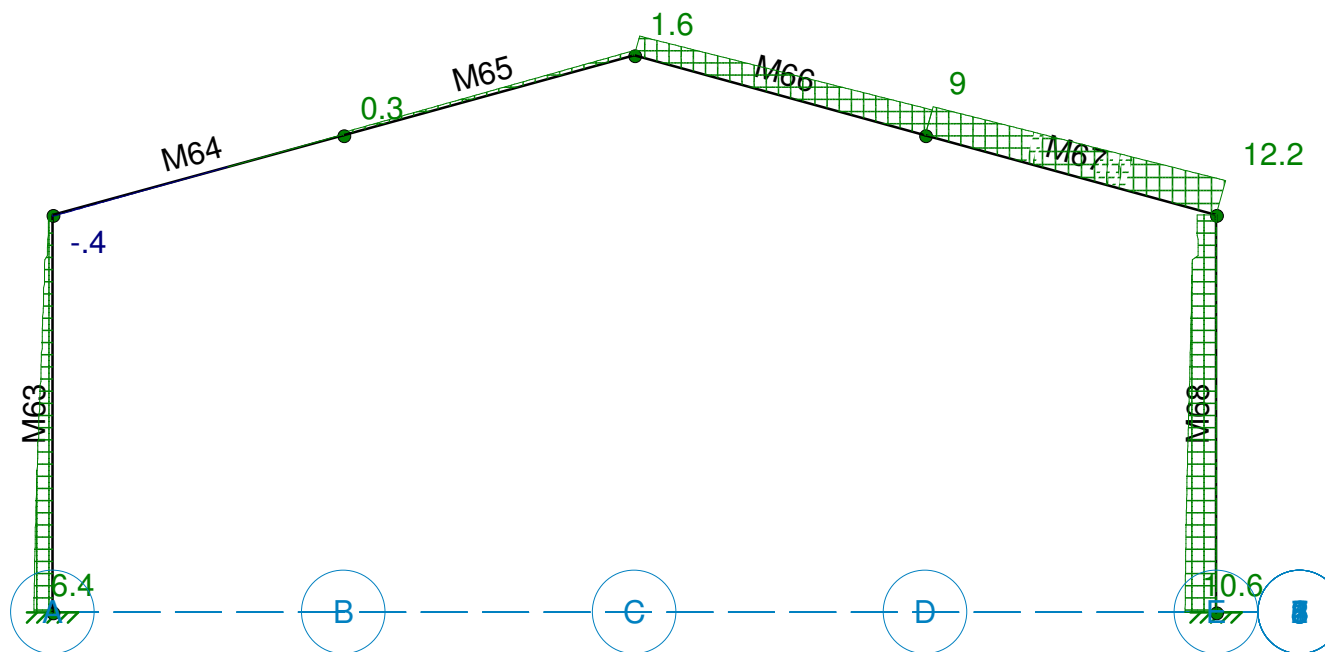
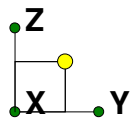
Ultraestación Chillán

Marco Típico - Momento (PP-Sy)

SK - 32

Feb 28, 2021 at 12:46 PM

Ultraestación Chillán.r3d



Results for LC 13, 60%PP+FY  
Member Axial Forces (mt)

Arriostro Ingenieros

Mario Rojas Bravo

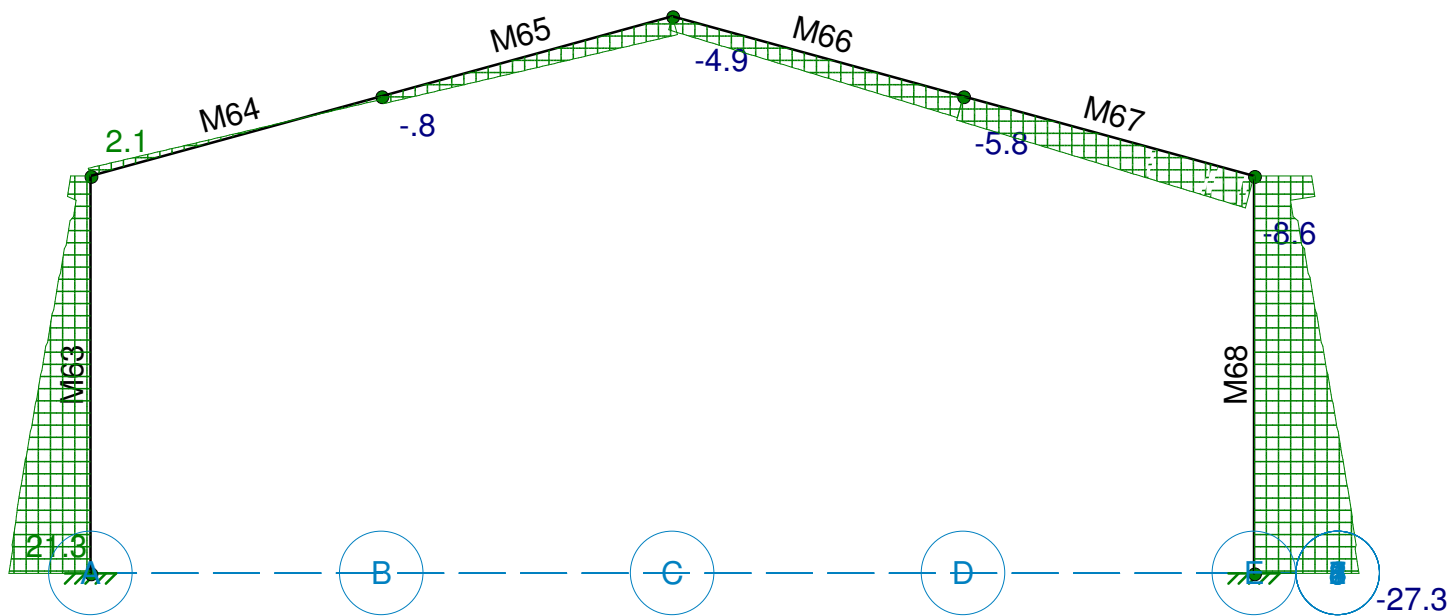
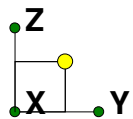
Ultraestación Chillán

Marco Típico - Carga Axial (60%PP+FY)

SK - 40

Mar 3, 2021 at 4:45 PM

Ultraestación Chillán.r3d



Results for LC 13, 60%PP+FY  
Member y Shear Forces (mt)

Arriostro Ingenieros

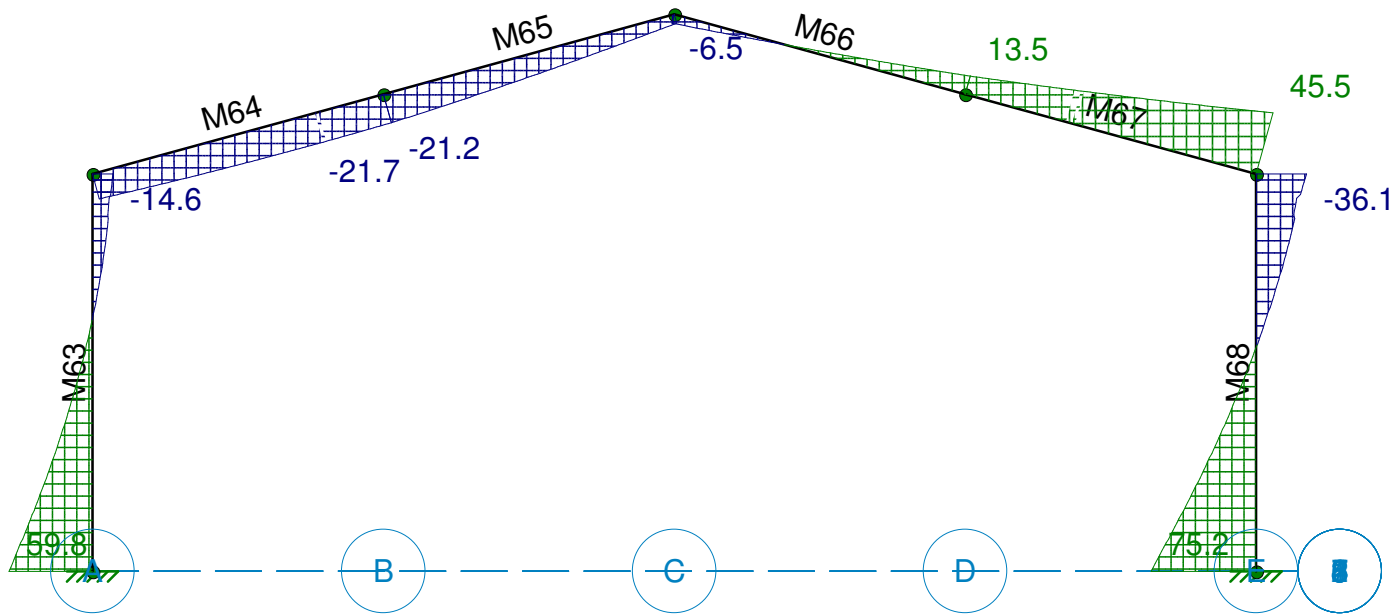
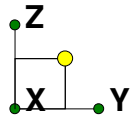
Mario Rojas Bravo

Ultraestación Chillán  
Marco Típico - Corte (60%PP+FY)

SK - 41

Mar 3, 2021 at 4:45 PM

Ultraestación Chillán.r3d



Results for LC 13, 60%PP+FY  
 Member z Bending Moments (mt-m)

Arriostro Ingenieros

Mario Rojas Bravo

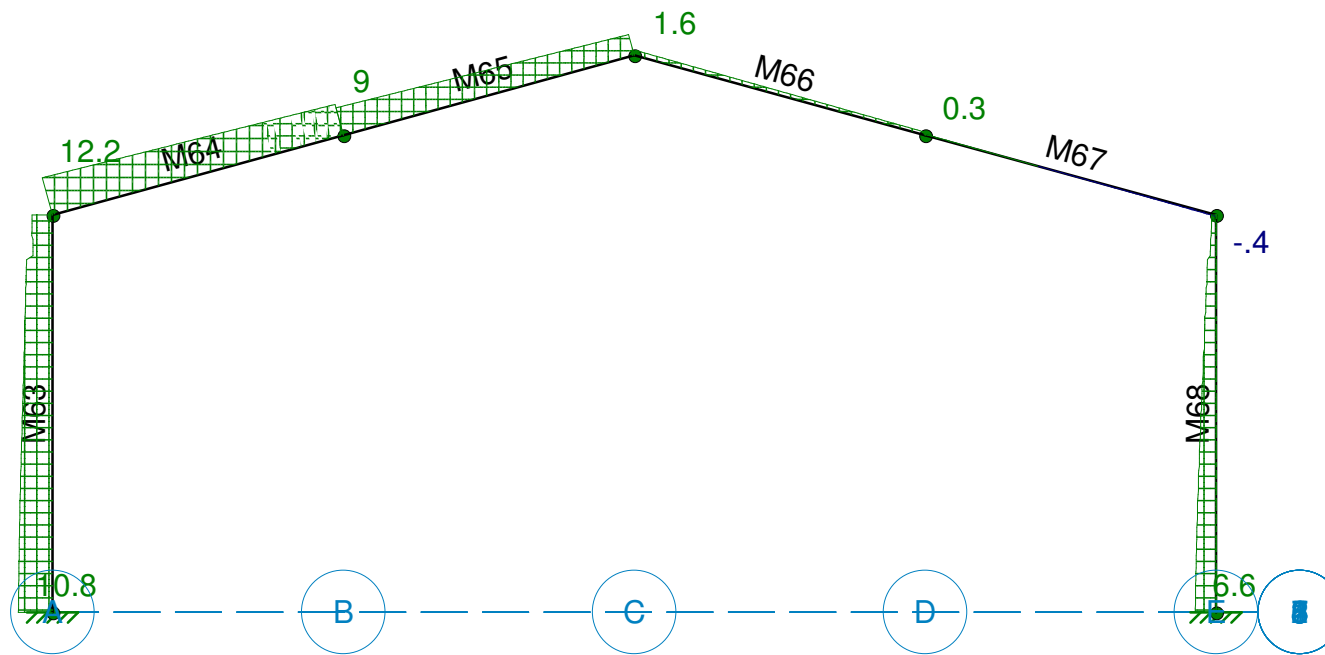
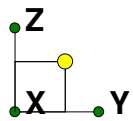
Ultraestación Chillán

Marco Típico - Momento (60%PP+FY)

SK - 42

Mar 3, 2021 at 4:46 PM

Ultraestación Chillán.r3d



Results for LC 15, 60%PP-FY  
Member Axial Forces (mt)

Arriostro Ingenieros

Mario Rojas Bravo

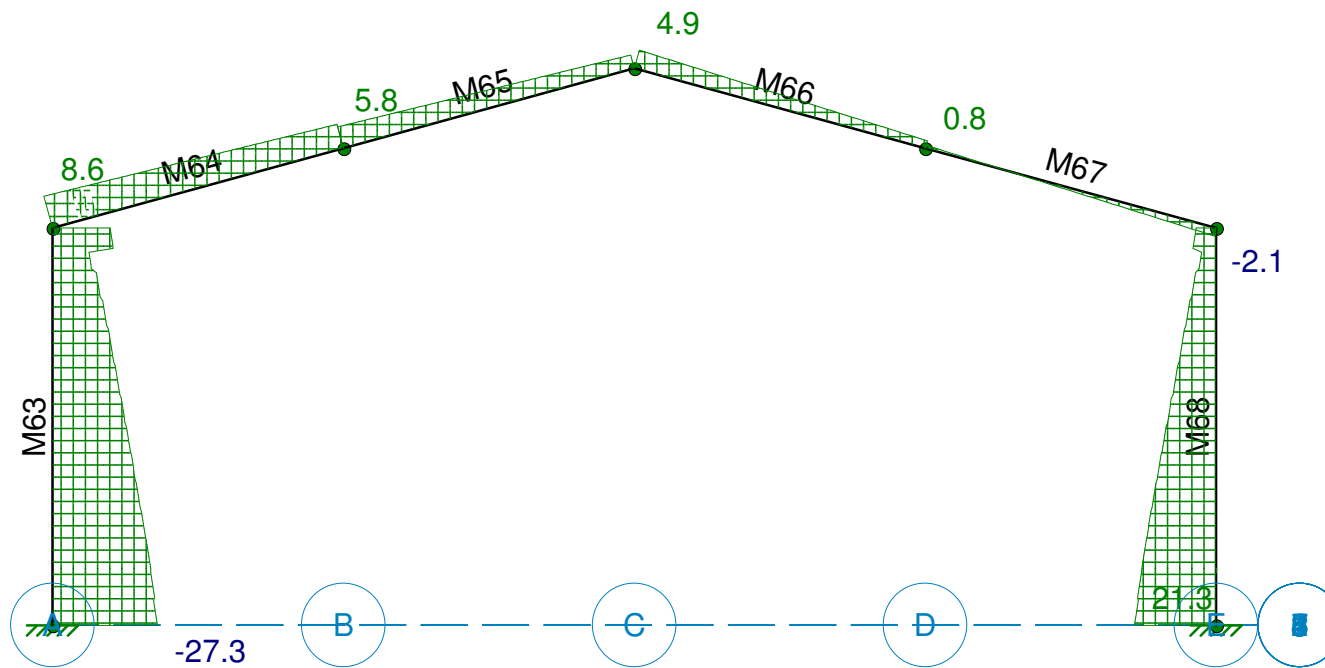
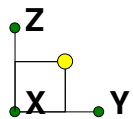
Ultraestación Chillán

Marco Típico - Carga Axial (60%PP-FY)

SK - 50

Mar 3, 2021 at 4:46 PM

Ultraestación Chillán.r3d



Results for LC 15, 60%PP-FY  
Member y Shear Forces (mt)

Arriostro Ingenieros

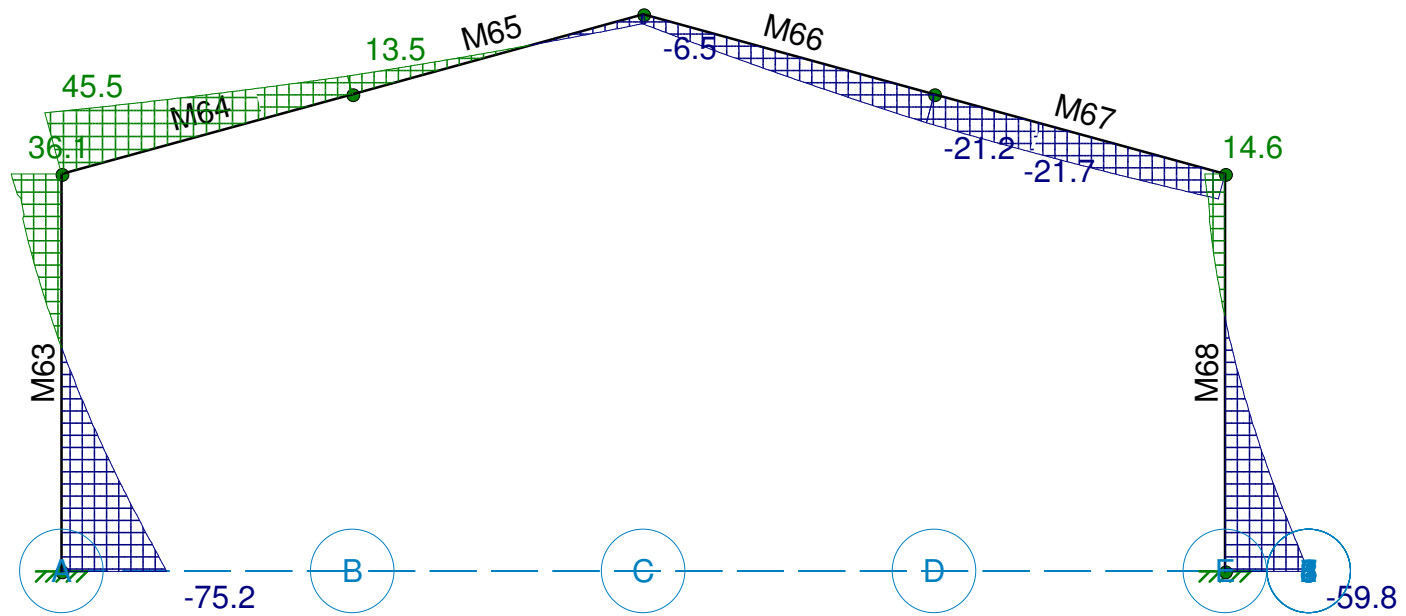
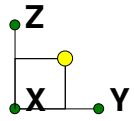
Mario Rojas Bravo

Ultraestación Chillán  
Marco Típico - Corte (60%PP-FY)

SK - 51

Mar 3, 2021 at 4:47 PM

Ultraestación Chillán.r3d



Results for LC 15, 60%PP-FY  
 Member z Bending Moments (mt-m)

Arriostro Ingenieros

Mario Rojas Bravo

Ultraestación Chillán

Marco Típico - Momento (60%PP-FY)

SK - 52

Mar 3, 2021 at 4:48 PM

Ultraestación Chillán.r3d



Column: **M63**

Shape: **RE75X30**

Material: **GEN-CONC-H20**

Length: **5.6 m**

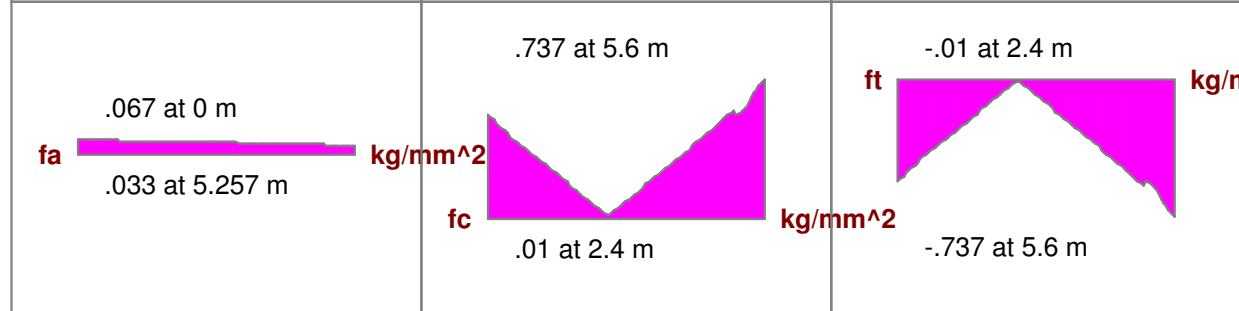
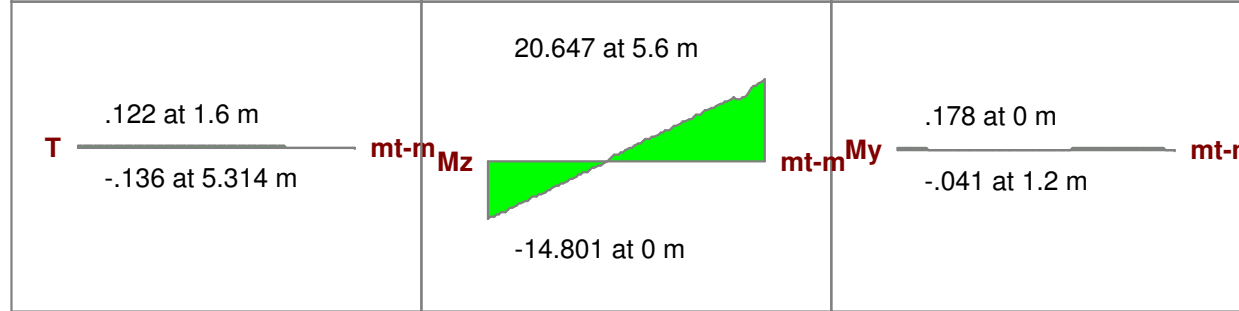
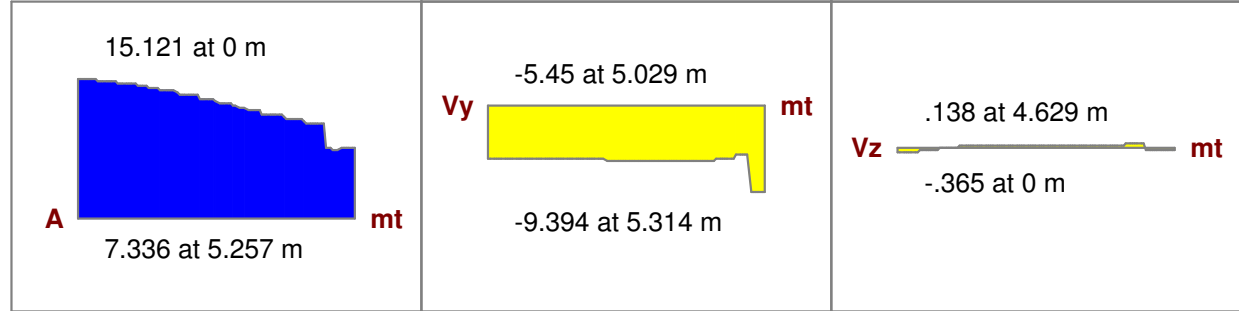
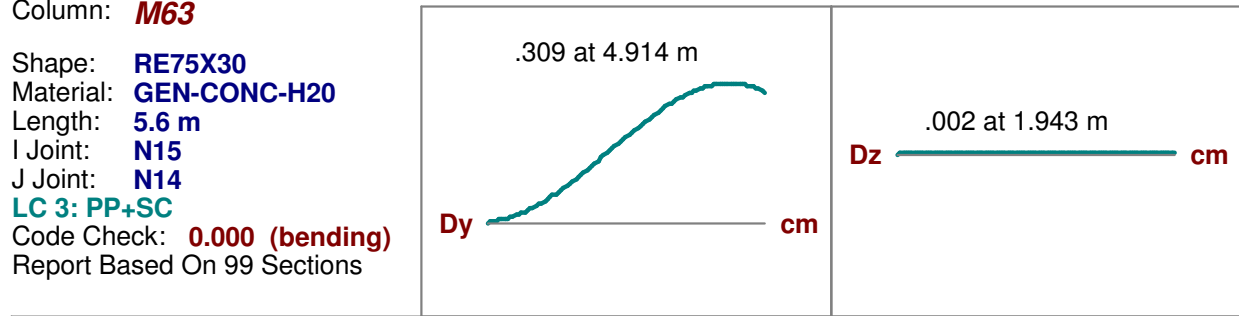
I Joint: **N15**

J Joint: **N14**

**LC 3: PP+SC**

Code Check: **0.000 (bending)**

Report Based On 99 Sections



Column: **M63**

Shape: **RE75X30**

Material: **GEN-CONC-H20**

Length: **5.6 m**

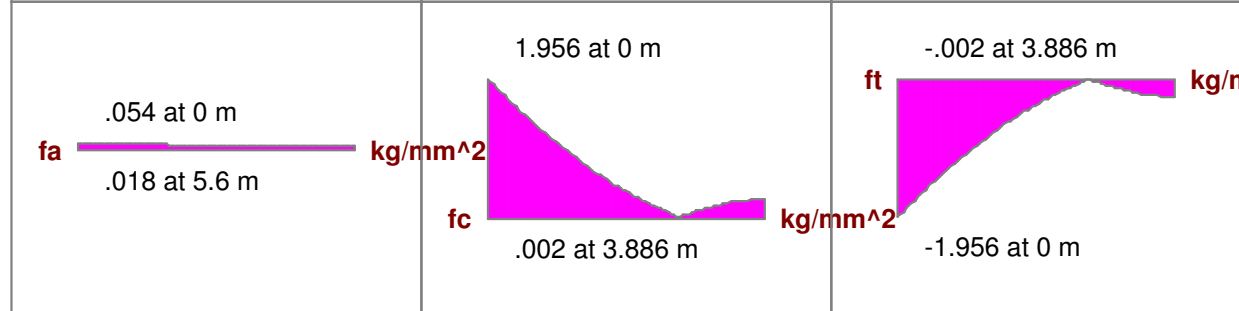
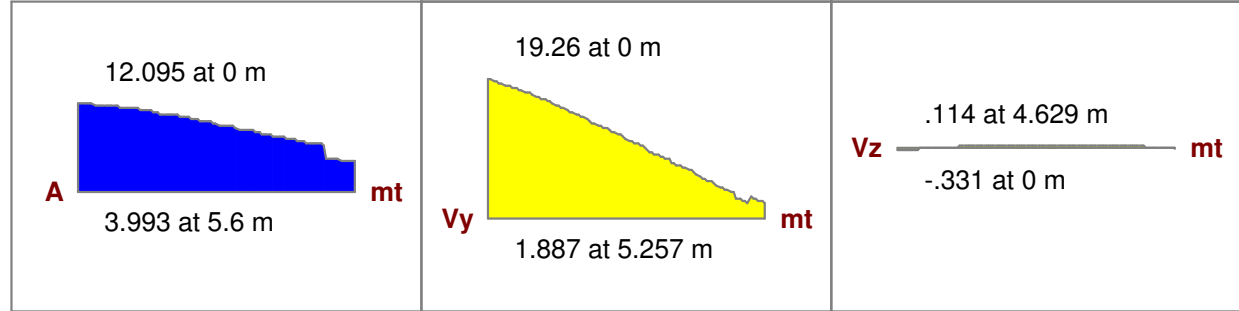
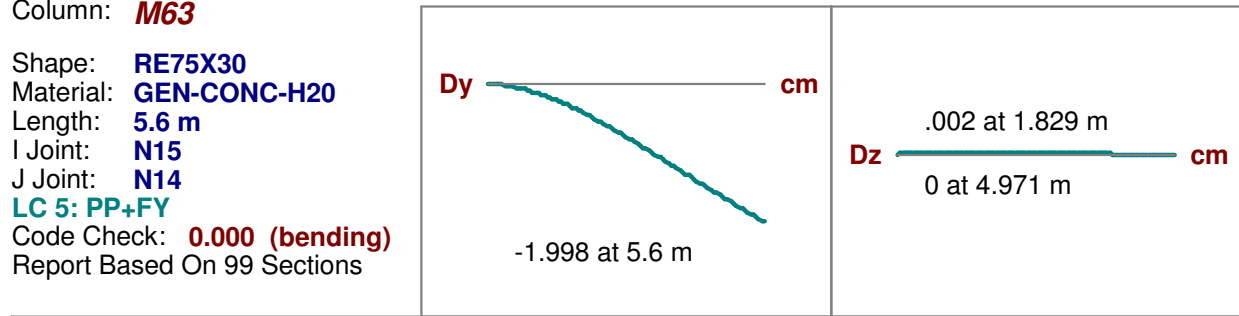
I Joint: **N15**

J Joint: **N14**

**LC 5: PP+FY**

Code Check: **0.000 (bending)**

Report Based On 99 Sections



Column: **M63**

Shape: **RE75X30**

Material: **GEN-CONC-H20**

Length: **5.6 m**

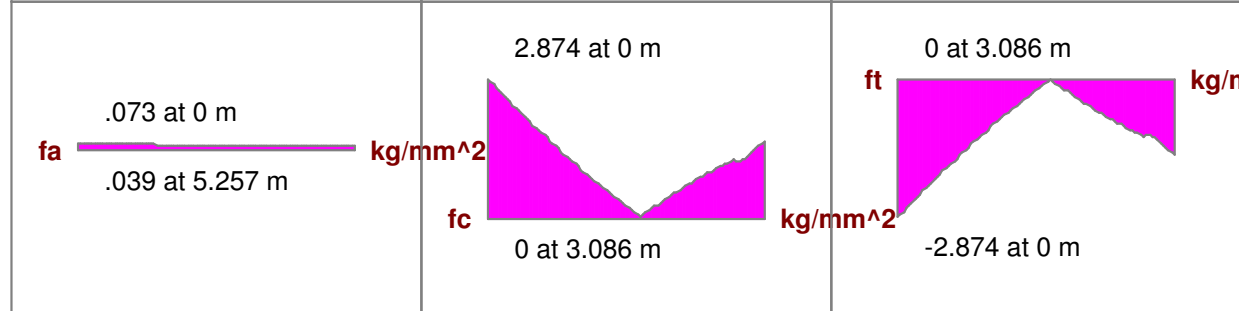
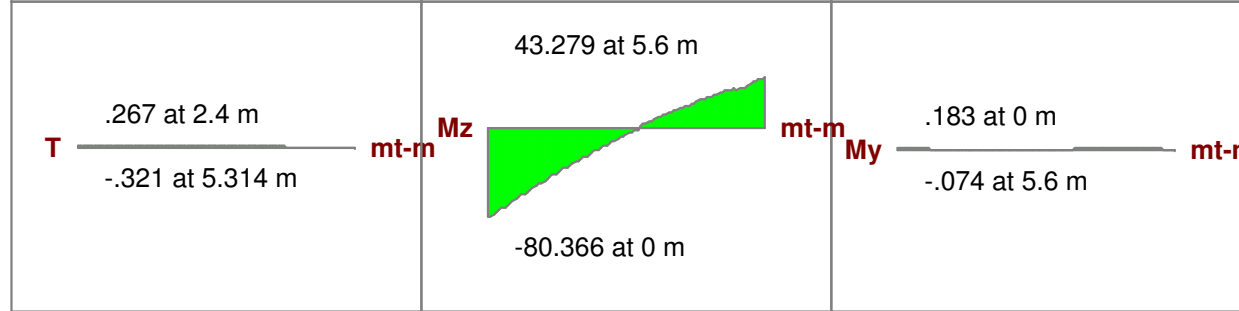
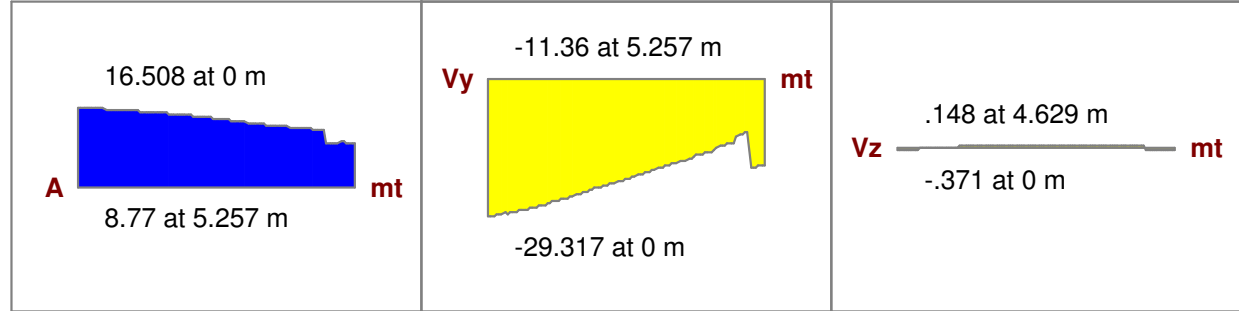
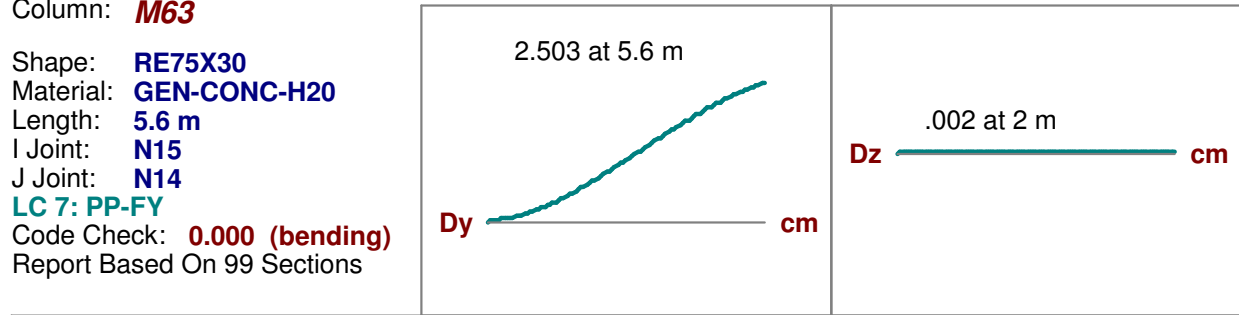
I Joint: **N15**

J Joint: **N14**

**LC 7: PP-FY**

Code Check: **0.000 (bending)**

Report Based On 99 Sections



Column: **M63**

Shape: **RE75X30**

Material: **GEN-CONC-H20**

Length: **5.6 m**

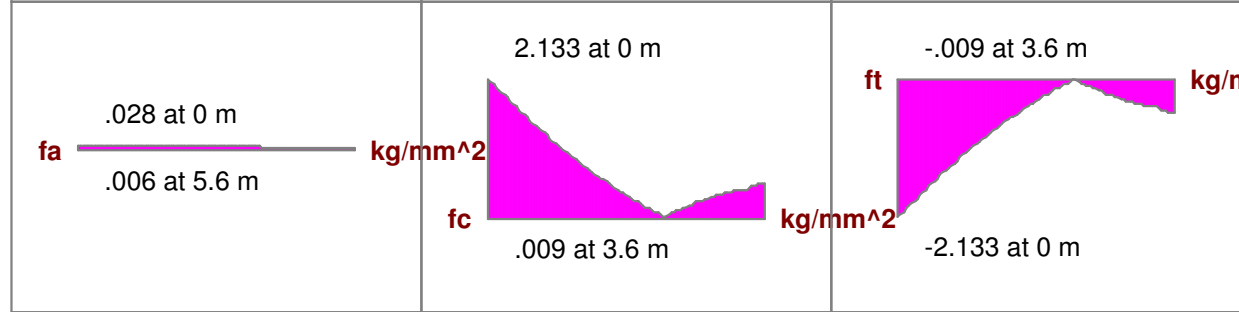
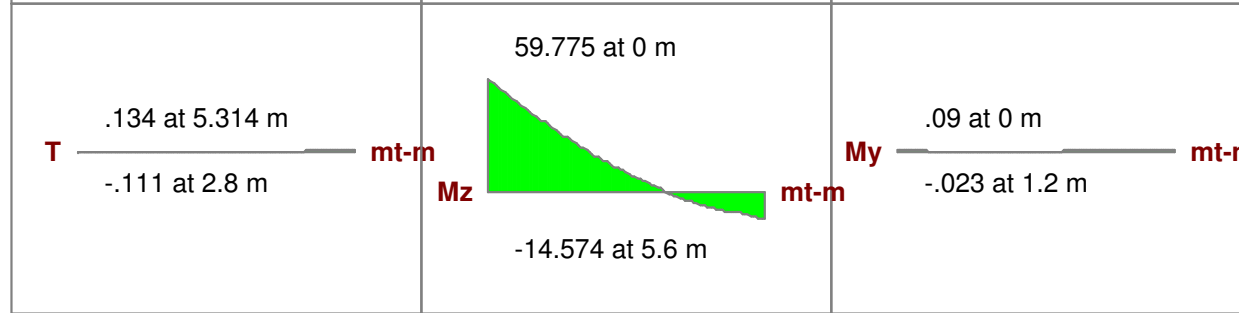
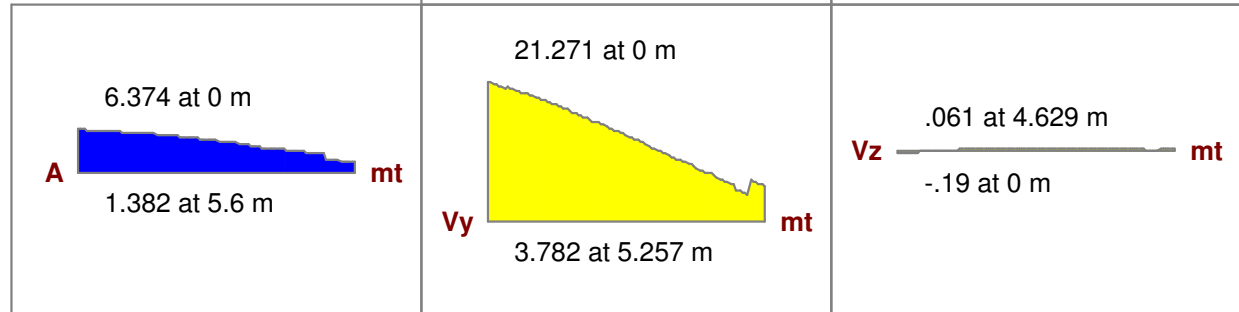
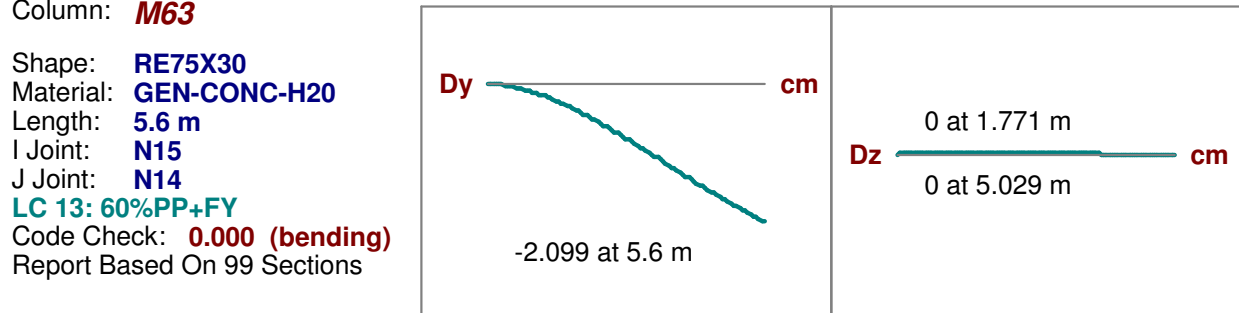
I Joint: **N15**

J Joint: **N14**

**LC 13: 60%PP+FY**

Code Check: **0.000 (bending)**

Report Based On 99 Sections



Column: **M63**

Shape: **RE75X30**

Material: **GEN-CONC-H20**

Length: **5.6 m**

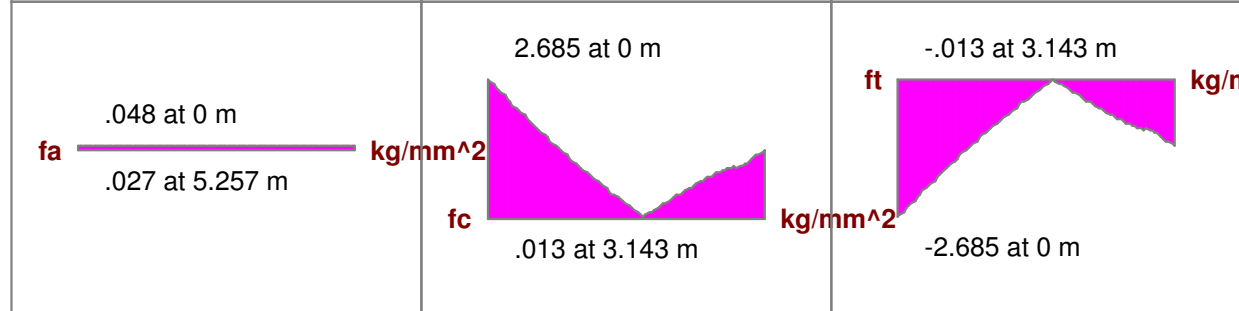
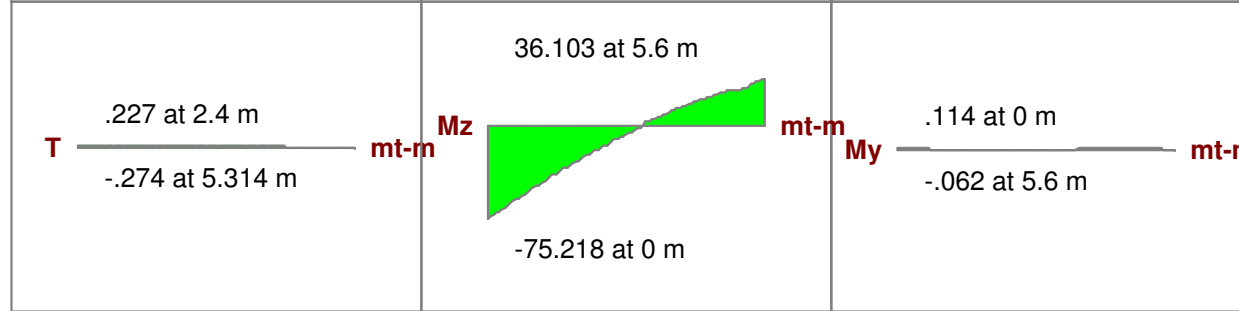
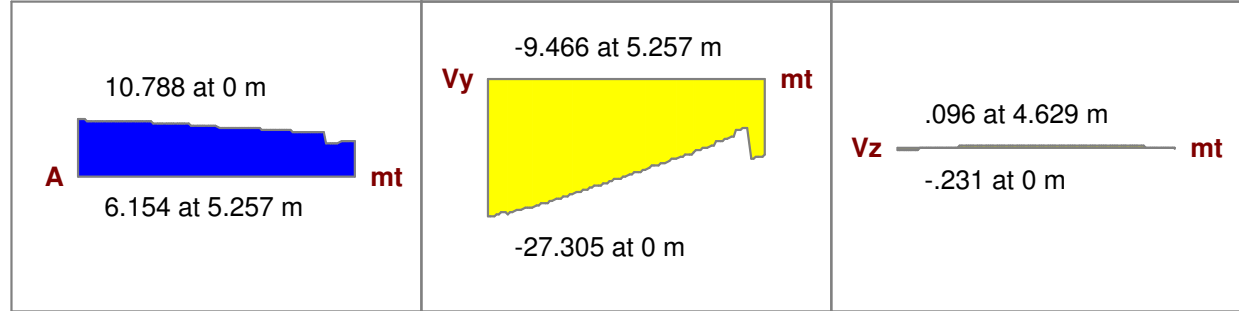
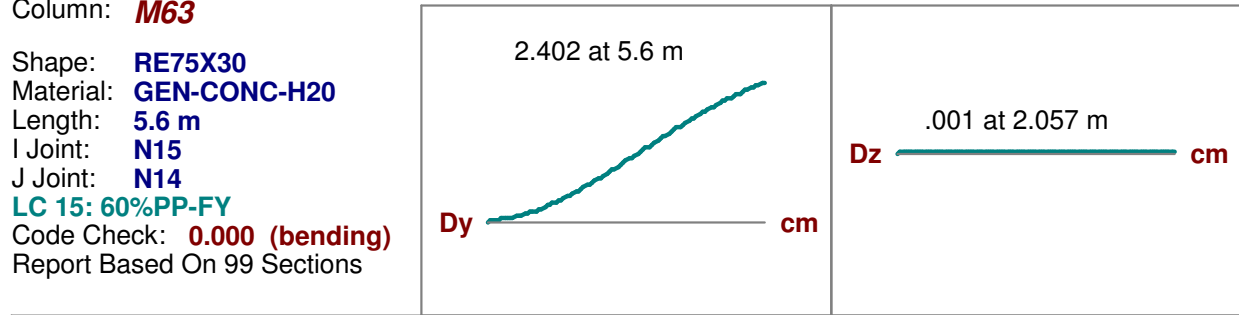
I Joint: **N15**

J Joint: **N14**

**LC 15: 60%PP-FY**

Code Check: **0.000 (bending)**

Report Based On 99 Sections



Column: **M68**

Shape: **RE75X30**

Material: **GEN-CONC-H20**

Length: **5.6 m**

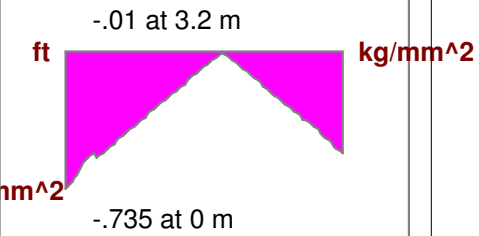
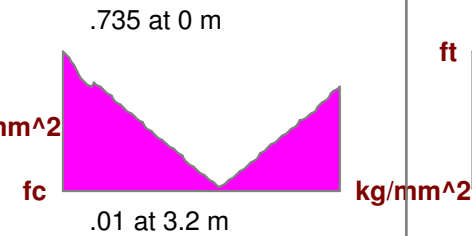
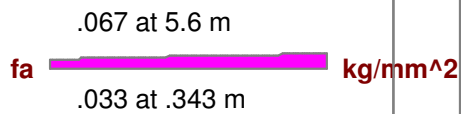
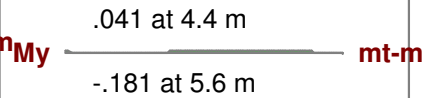
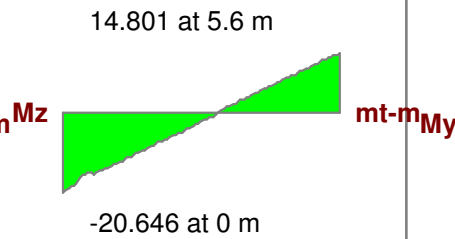
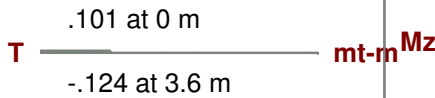
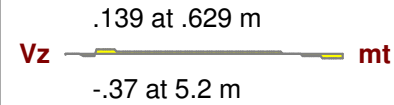
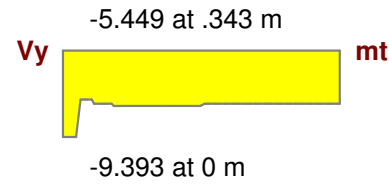
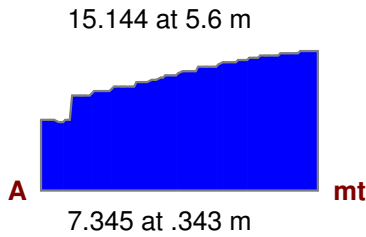
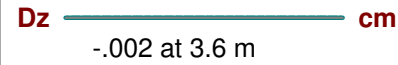
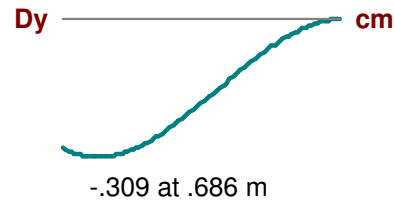
I Joint: **N12**

J Joint: **N11**

**LC 3: PP+SC**

Code Check: **0.000 (bending)**

Report Based On 99 Sections



Column: **M68**

Shape: **RE75X30**

Material: **GEN-CONC-H20**

Length: **5.6 m**

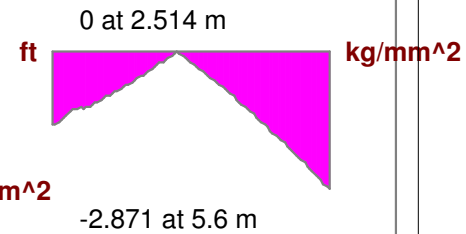
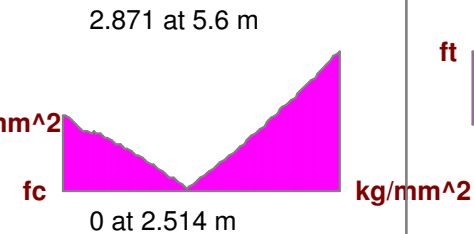
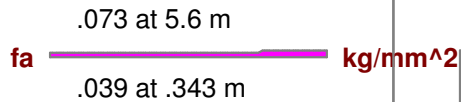
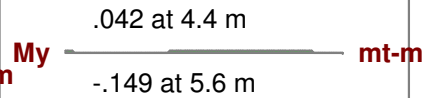
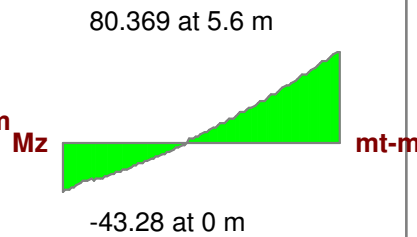
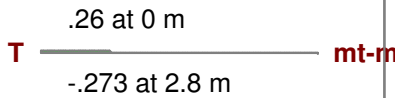
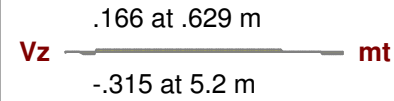
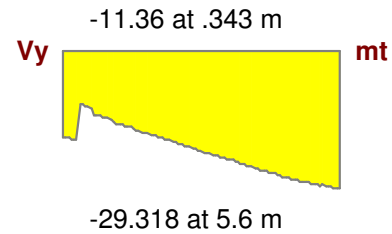
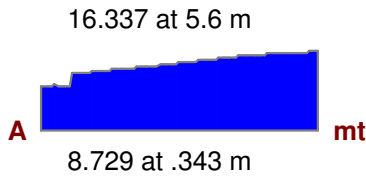
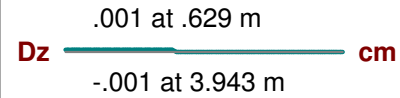
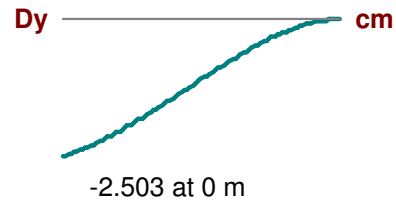
I Joint: **N12**

J Joint: **N11**

**LC 5: PP+FY**

Code Check: **0.000 (bending)**

Report Based On 99 Sections



Column: **M68**

Shape: **RE75X30**

Material: **GEN-CONC-H20**

Length: **5.6 m**

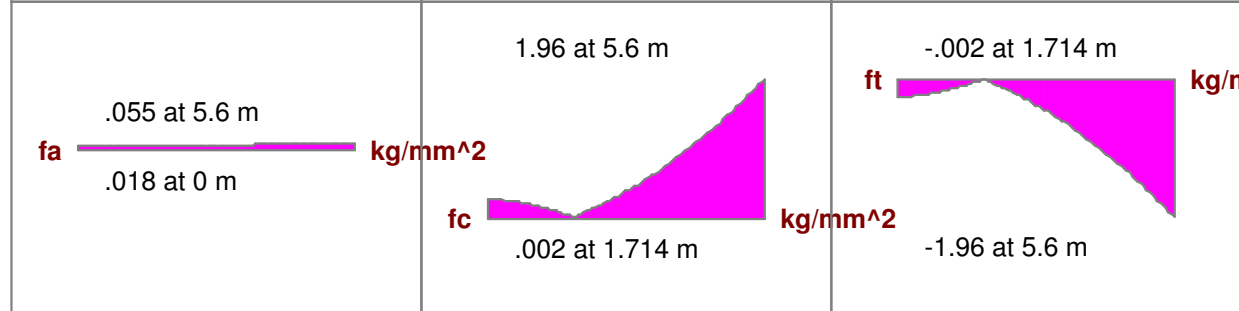
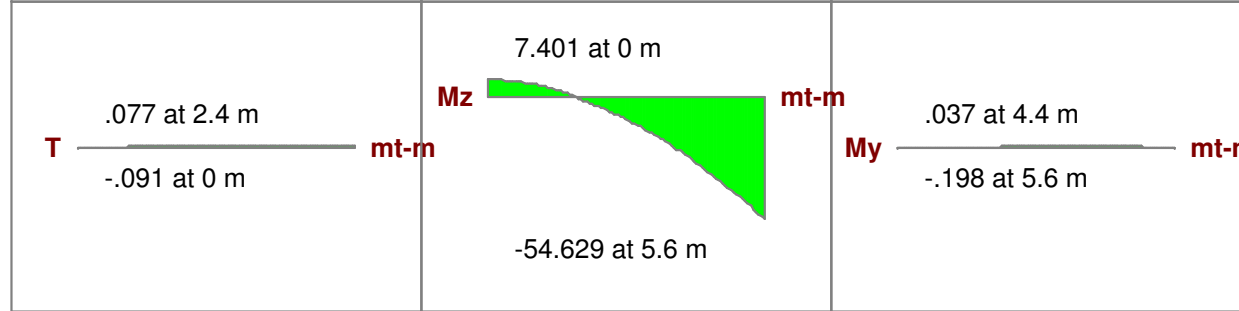
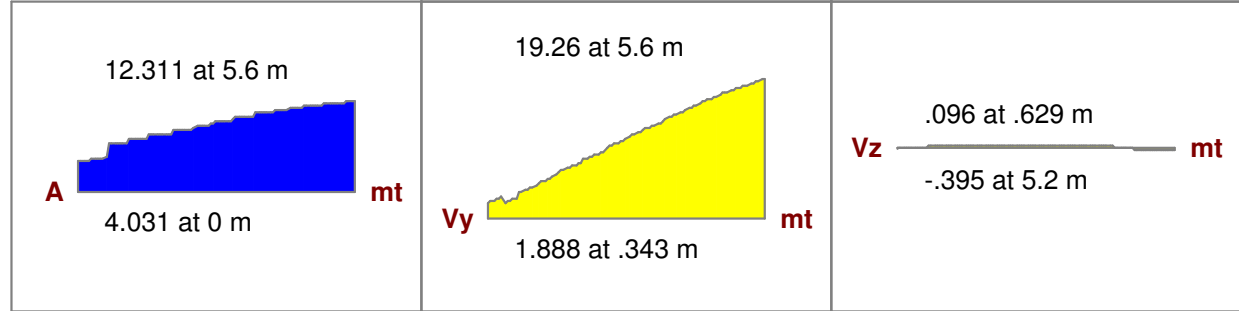
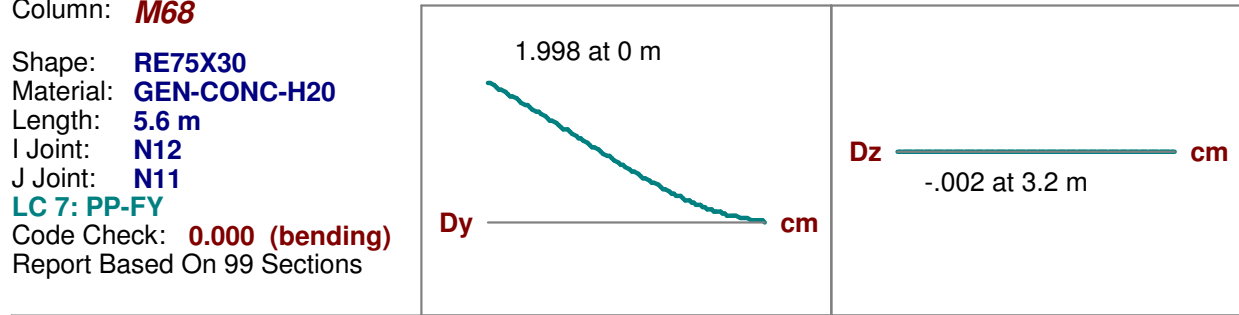
I Joint: **N12**

J Joint: **N11**

**LC 7: PP-FY**

Code Check: **0.000 (bending)**

Report Based On 99 Sections





Column: **M68**

Shape: **RE75X30**

Material: **GEN-CONC-H20**

Length: **5.6 m**

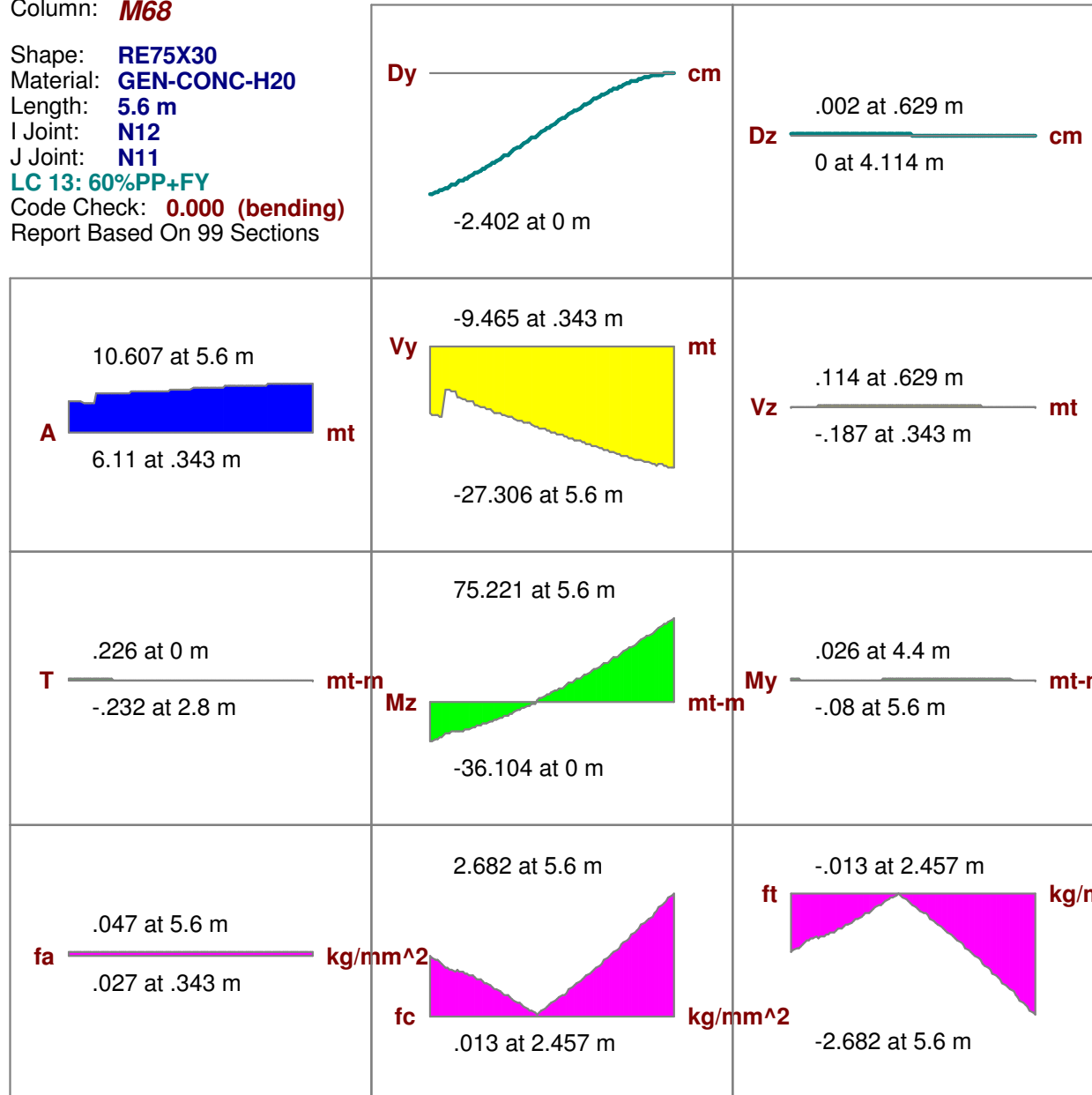
I Joint: **N12**

J Joint: **N11**

**LC 13: 60%PP+FY**

Code Check: **0.000 (bending)**

Report Based On 99 Sections



Column: **M68**

Shape: **RE75X30**

Material: **GEN-CONC-H20**

Length: **5.6 m**

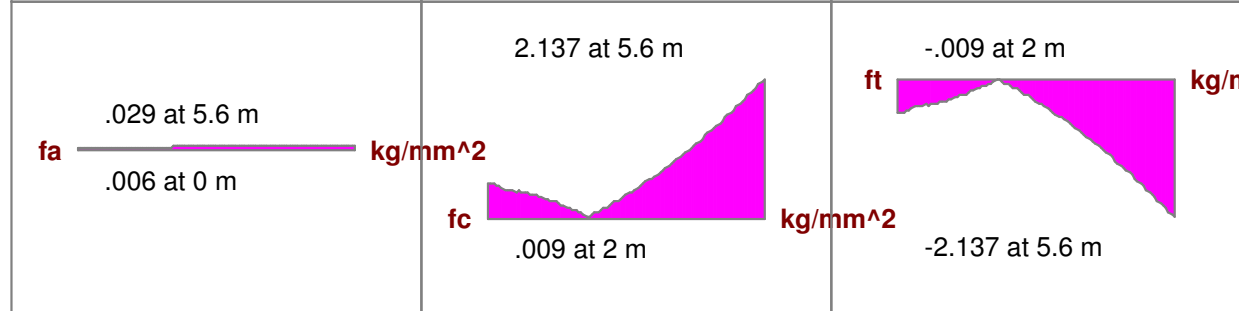
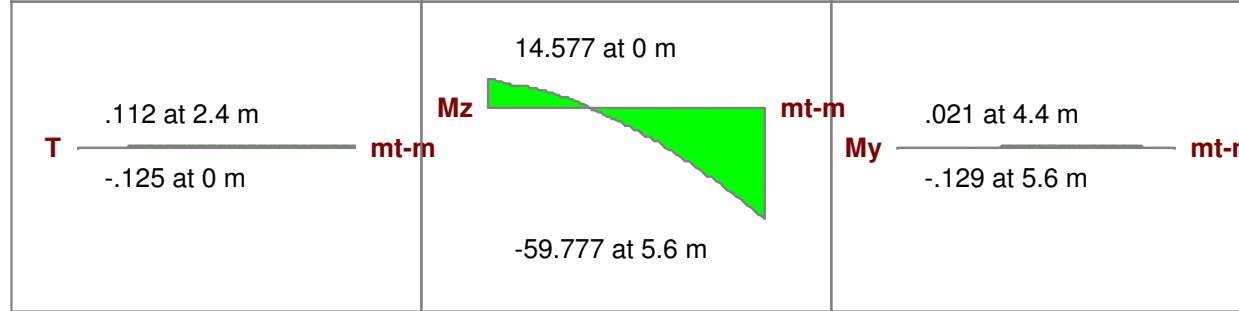
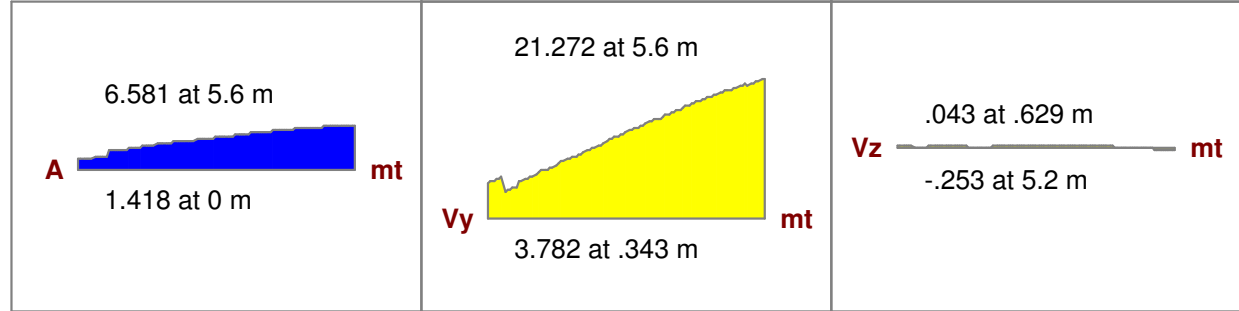
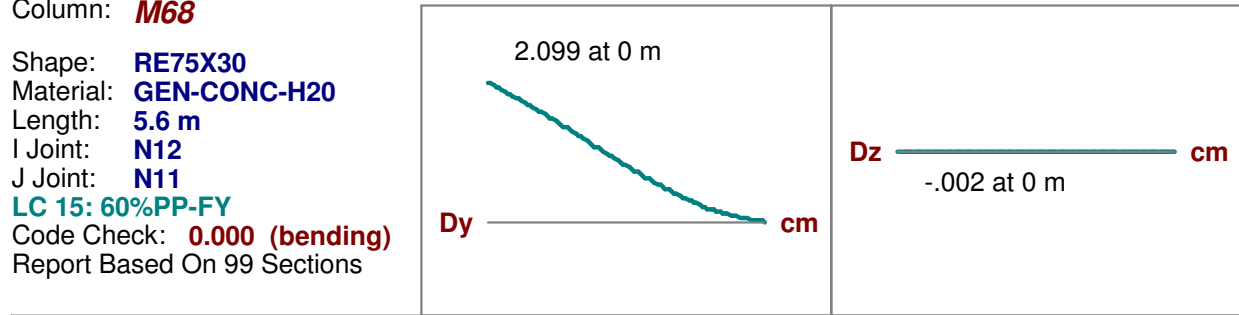
I Joint: **N12**

J Joint: **N11**

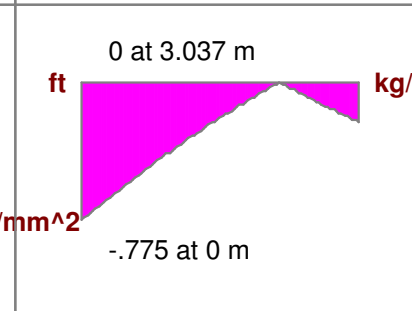
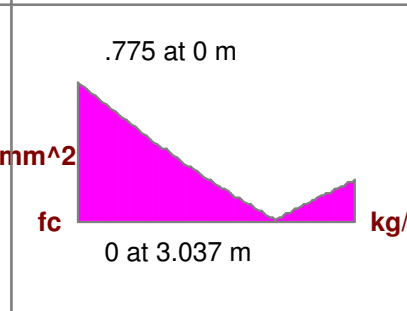
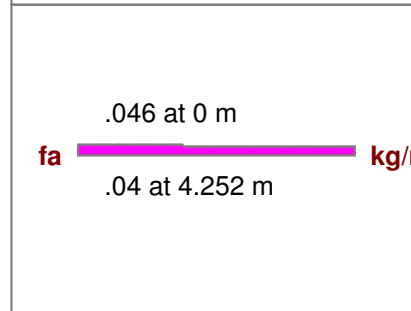
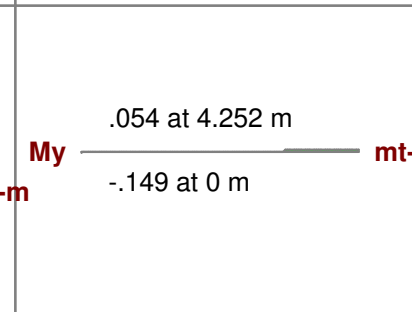
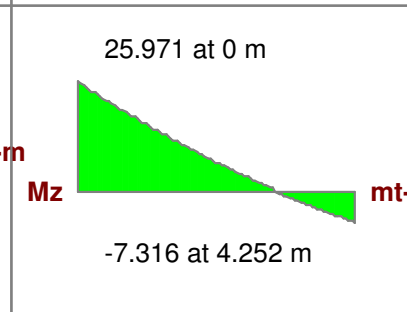
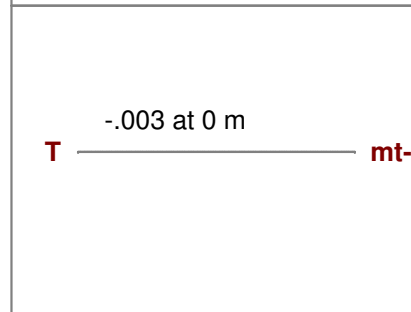
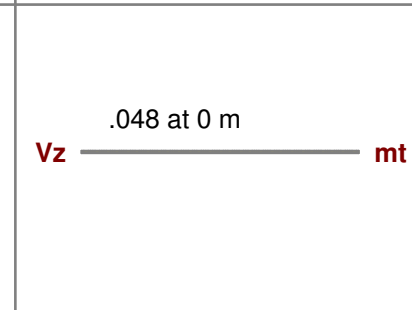
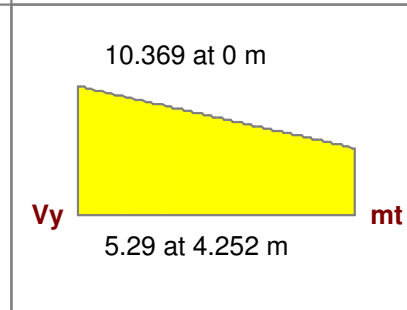
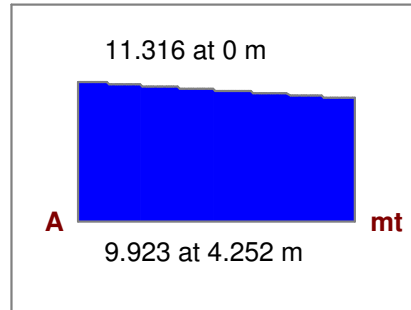
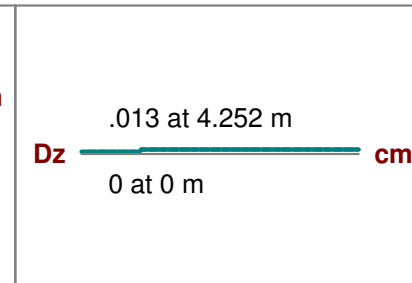
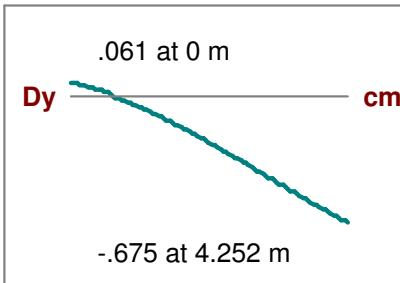
**LC 15: 60%PP-FY**

Code Check: **0.000 (bending)**

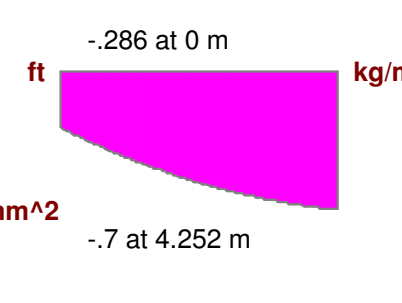
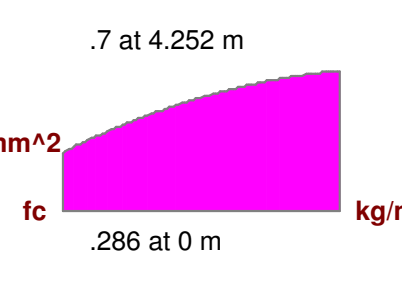
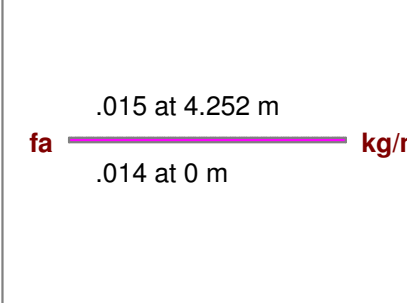
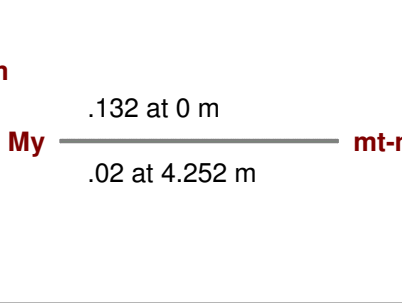
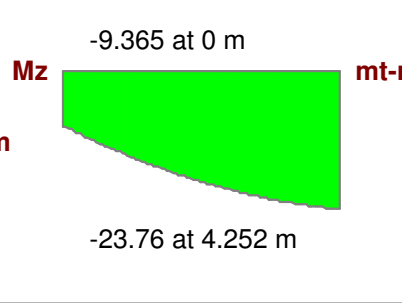
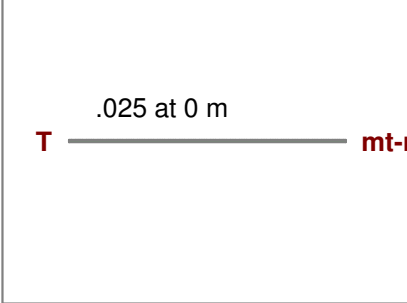
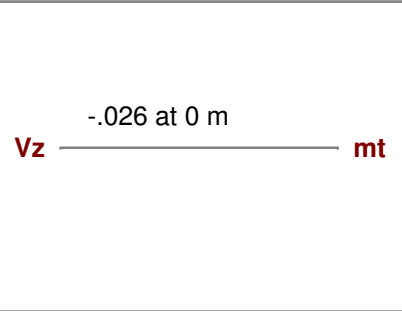
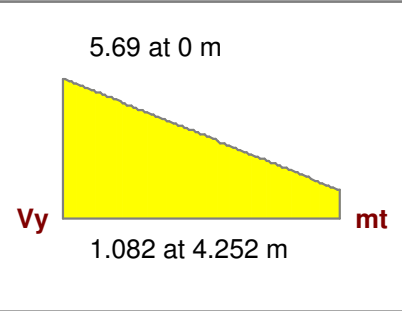
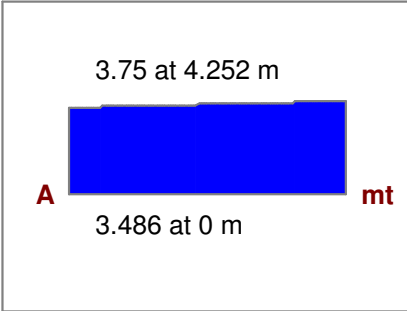
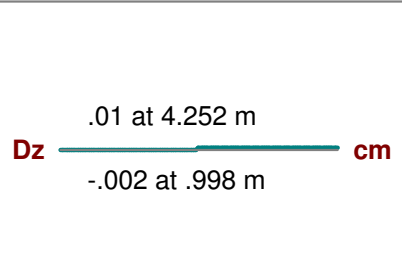
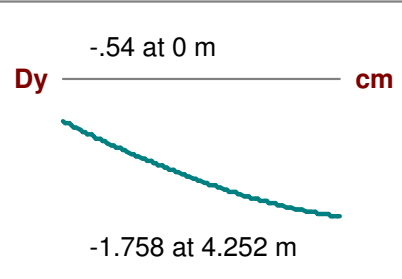
Report Based On 99 Sections



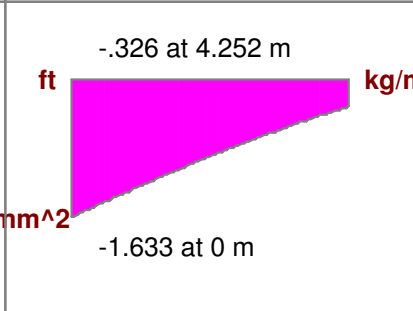
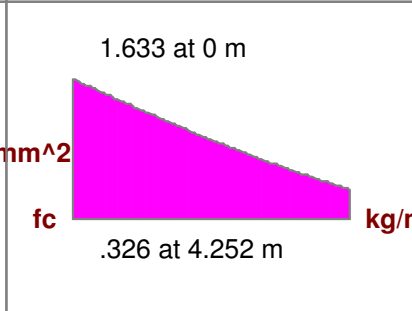
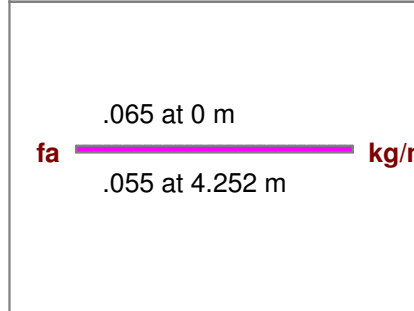
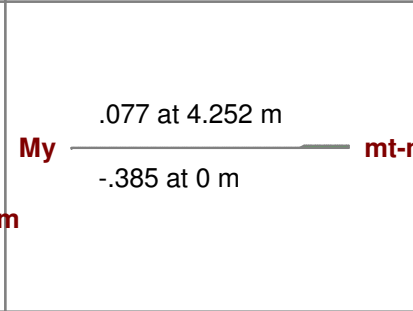
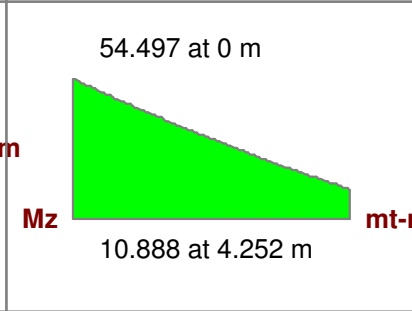
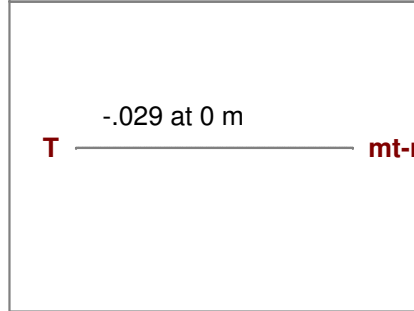
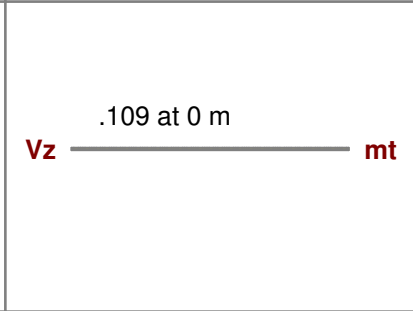
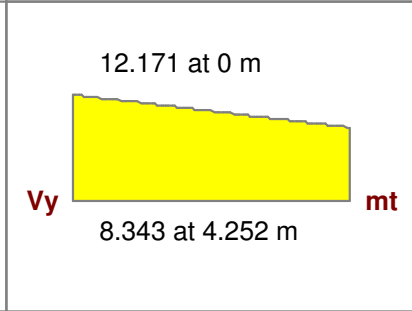
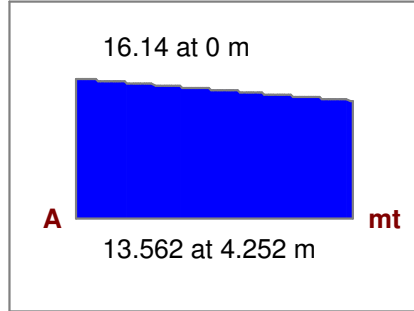
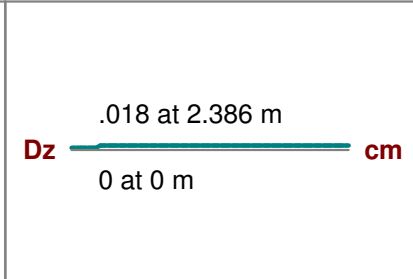
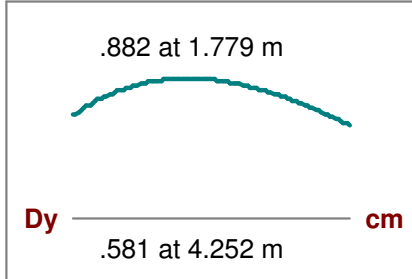
Beam: **M64**  
 Shape: **RE82.5X30**  
 Material: **GEN-CONC-H20**  
 Length: **4.252 m**  
 I Joint: **N14**  
 J Joint: **N226**  
**LC 3: PP+SC**  
 Code Check: **0.000 (bending)**  
 Report Based On 99 Sections



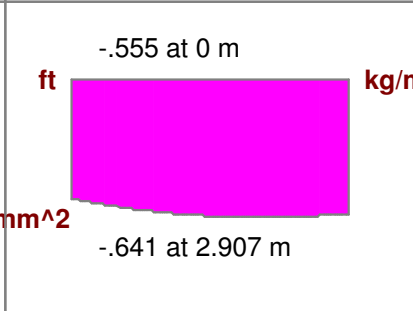
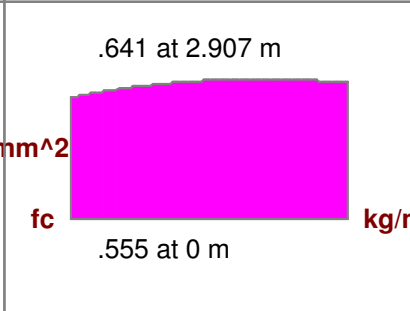
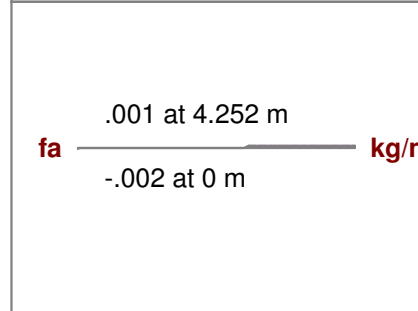
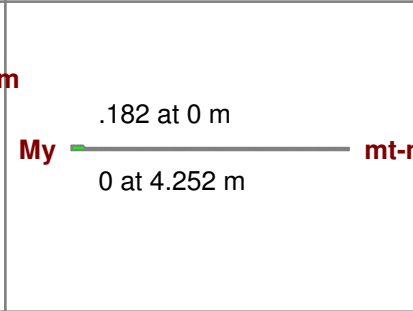
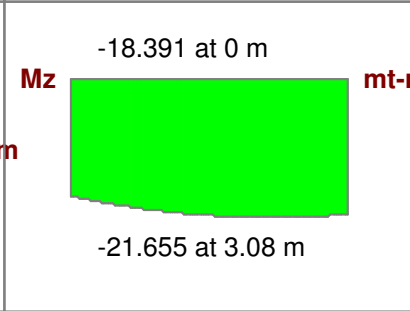
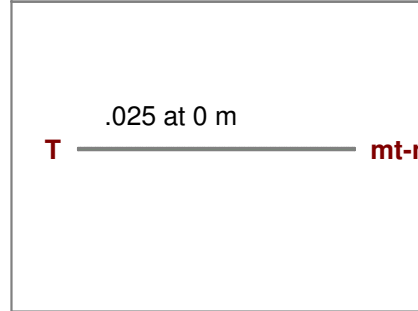
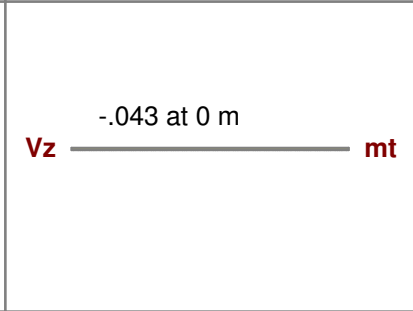
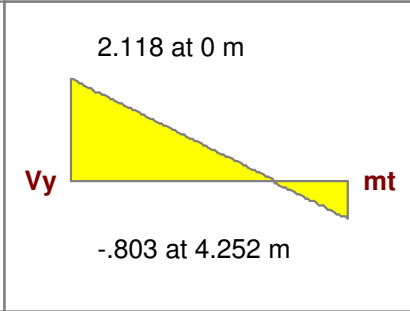
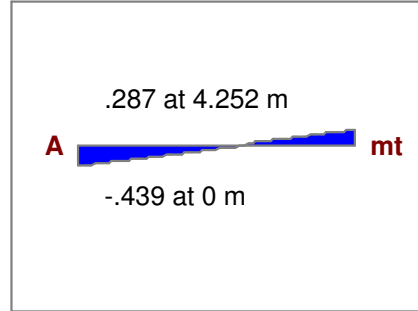
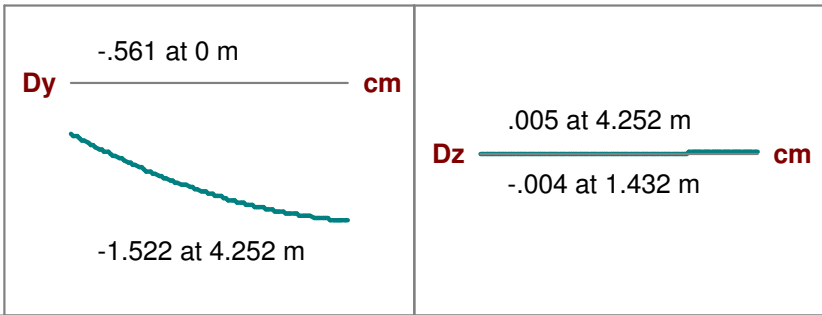
Beam: **M64**  
 Shape: **RE82.5X30**  
 Material: **GEN-CONC-H20**  
 Length: **4.252 m**  
 I Joint: **N14**  
 J Joint: **N226**  
**LC 5: PP+FY**  
 Code Check: **0.000 (bending)**  
 Report Based On 99 Sections



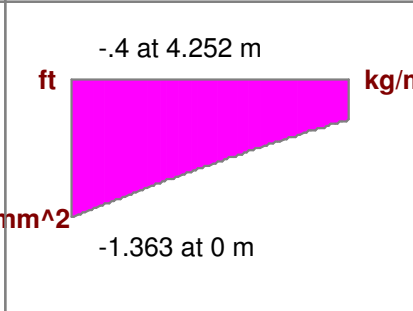
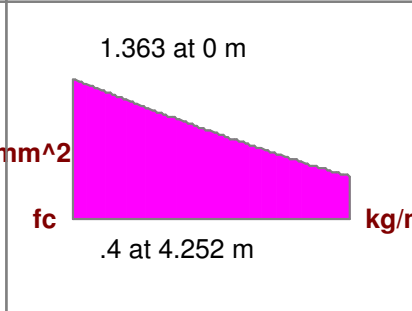
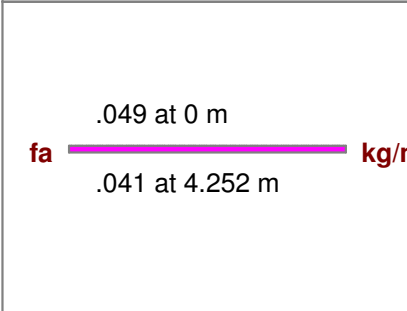
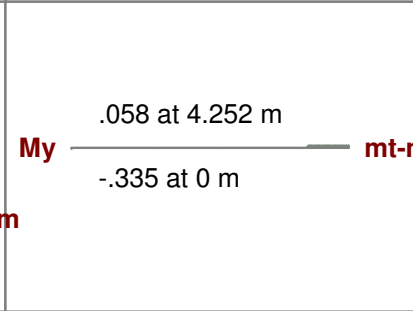
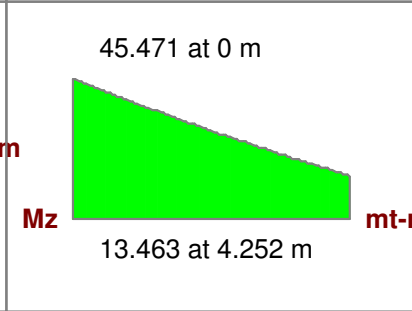
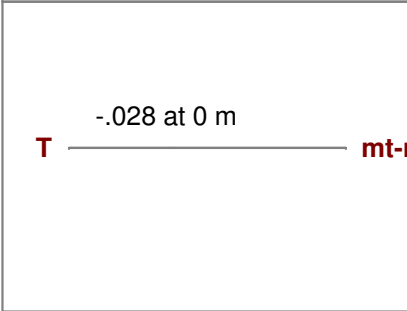
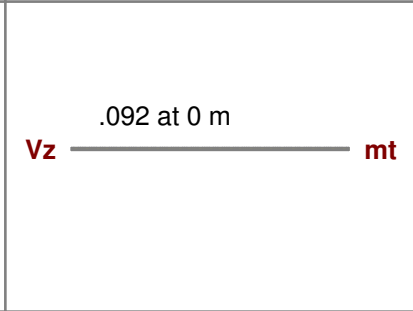
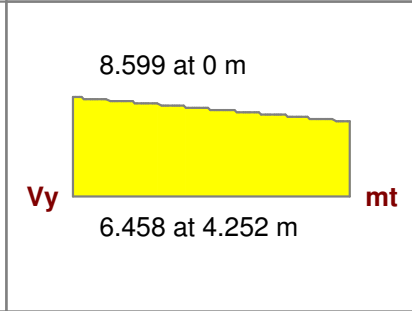
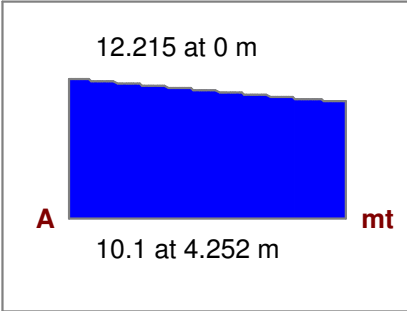
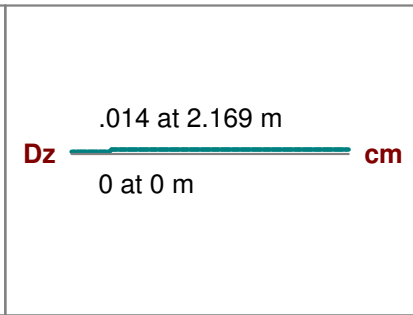
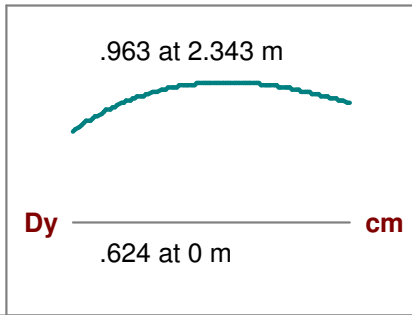
Beam: **M64**  
 Shape: **RE82.5X30**  
 Material: **GEN-CONC-H20**  
 Length: **4.252 m**  
 I Joint: **N14**  
 J Joint: **N226**  
**LC 7: PP-FY**  
 Code Check: **0.000 (bending)**  
 Report Based On 99 Sections



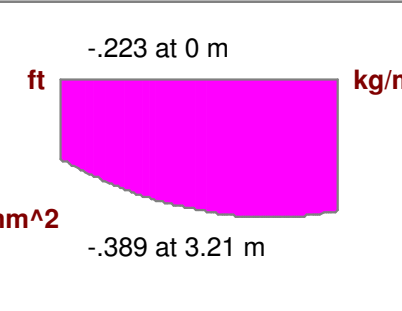
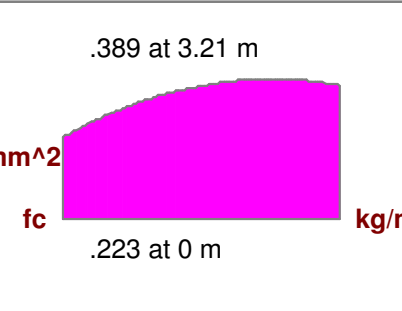
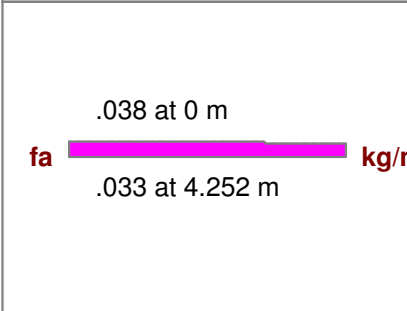
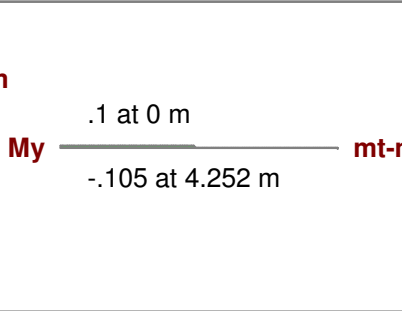
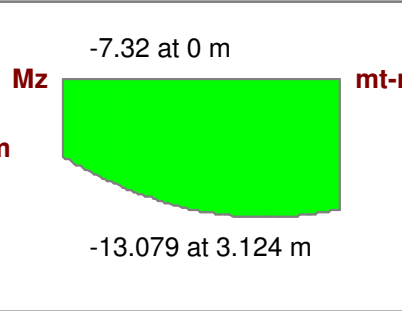
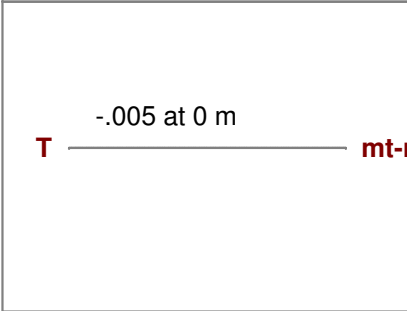
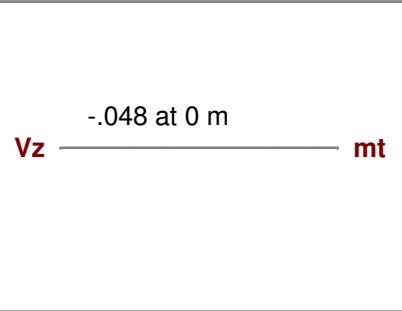
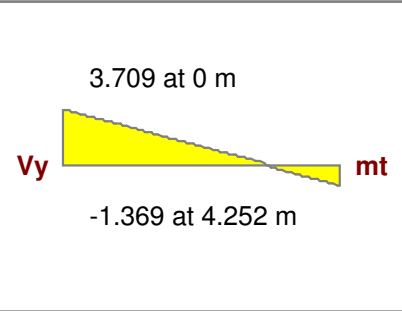
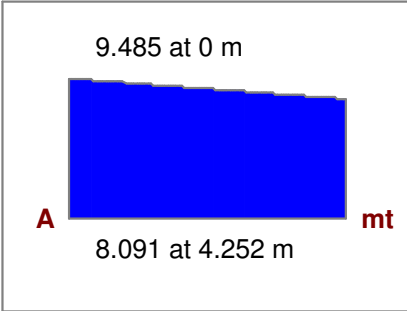
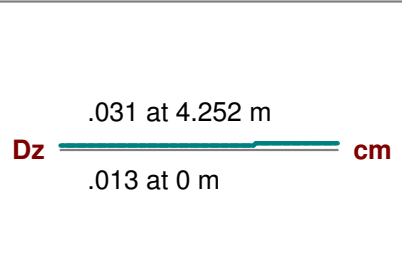
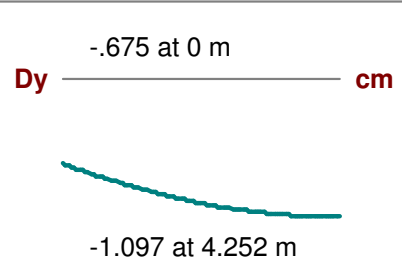
Beam: **M64**  
 Shape: **RE82.5X30**  
 Material: **GEN-CONC-H20**  
 Length: **4.252 m**  
 I Joint: **N14**  
 J Joint: **N226**  
**LC 13: 60%PP+FY**  
 Code Check: **0.000 (bending)**  
 Report Based On 99 Sections



Beam: **M64**  
 Shape: **RE82.5X30**  
 Material: **GEN-CONC-H20**  
 Length: **4.252 m**  
 I Joint: **N14**  
 J Joint: **N226**  
**LC 15: 60%PP-FY**  
 Code Check: **0.000 (bending)**  
 Report Based On 99 Sections

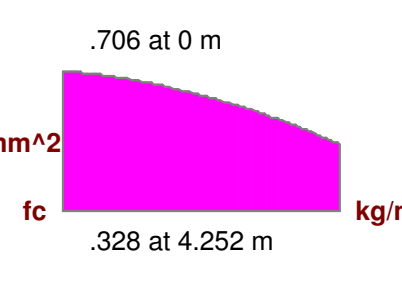
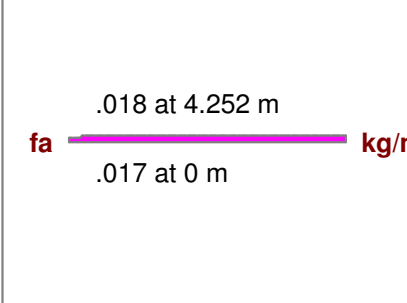
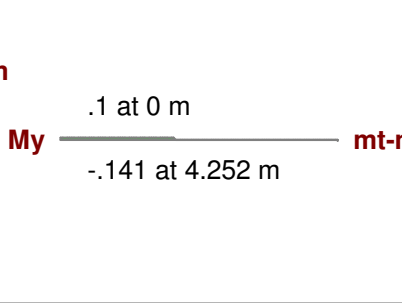
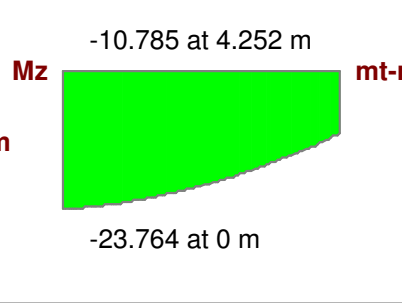
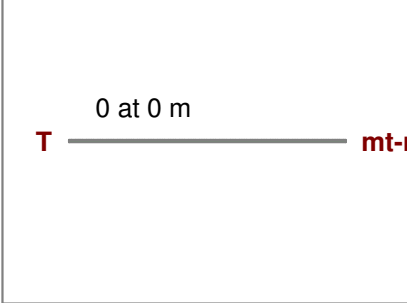
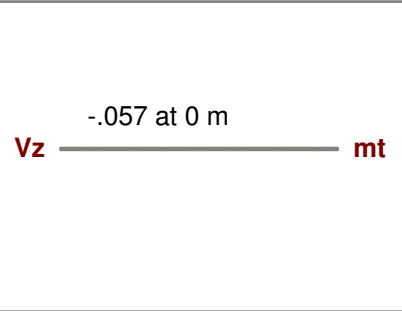
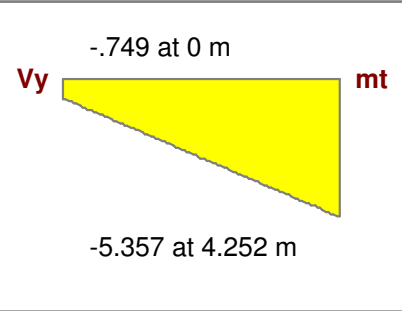
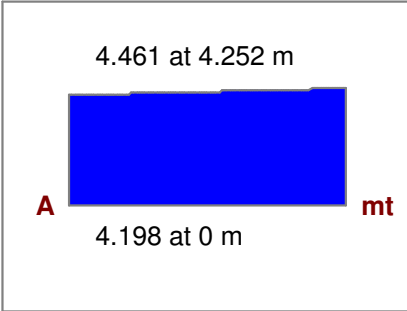
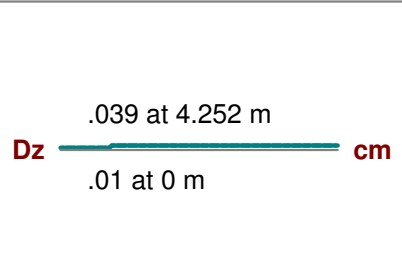
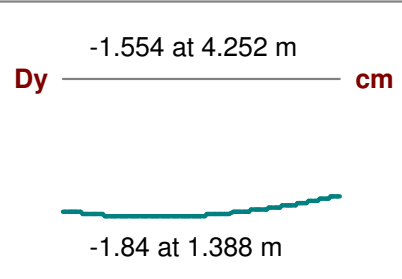


Beam: **M65**  
 Shape: **RE82.5X30**  
 Material: **GEN-CONC-H20**  
 Length: **4.252 m**  
 I Joint: **N226**  
 J Joint: **N13**  
**LC 3: PP+SC**  
 Code Check: **0.000 (bending)**  
 Report Based On 99 Sections

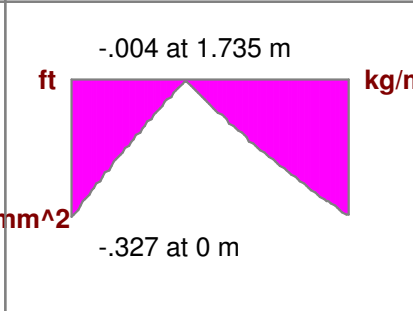
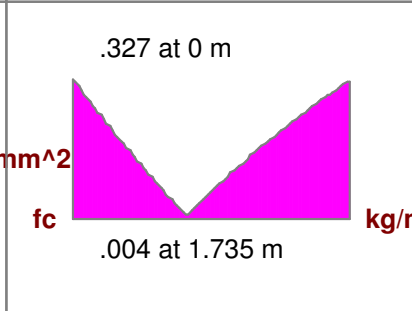
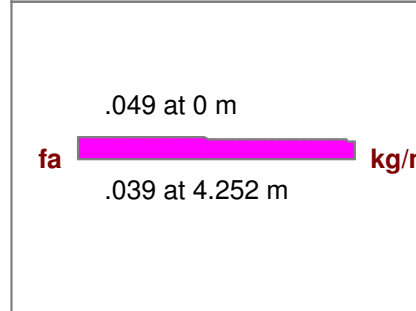
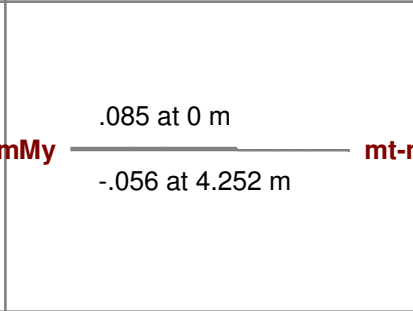
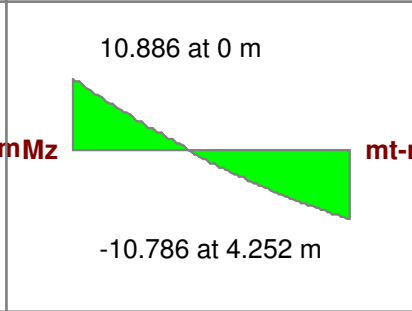
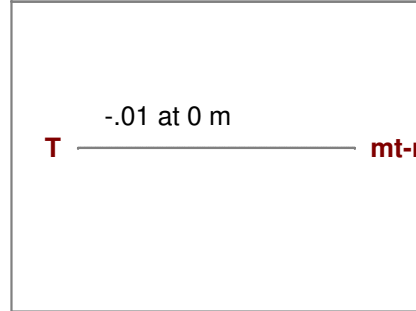
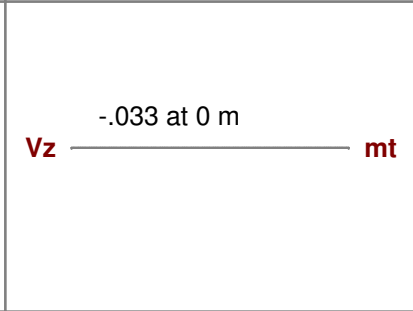
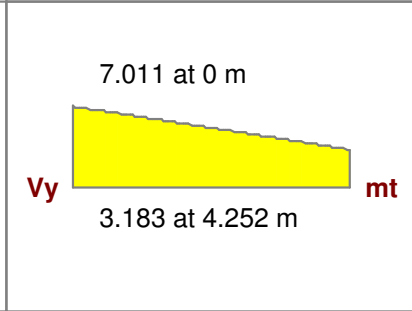
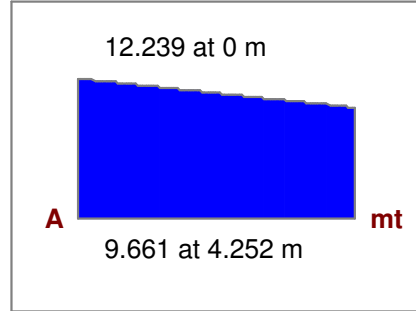
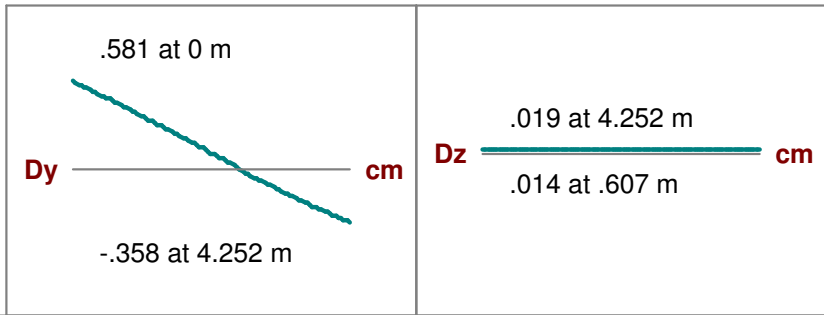




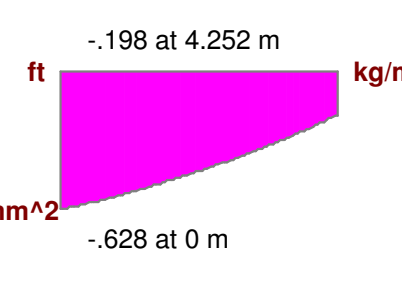
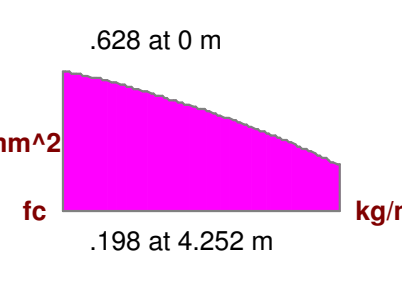
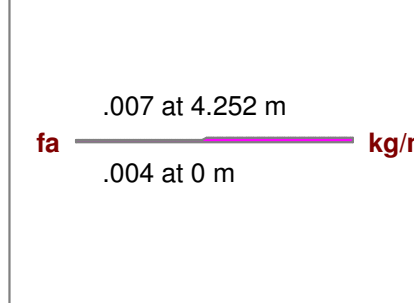
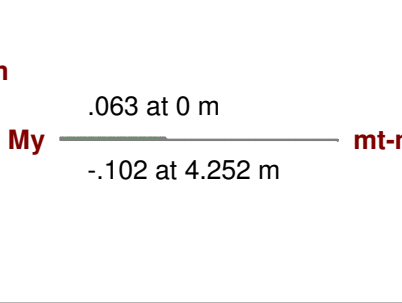
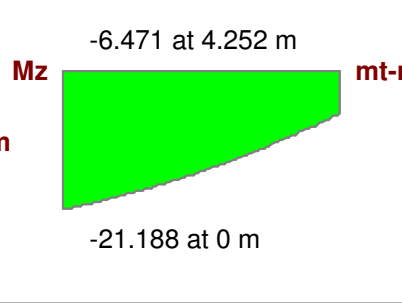
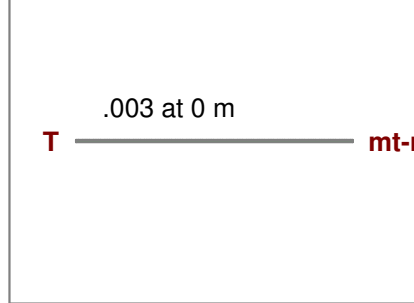
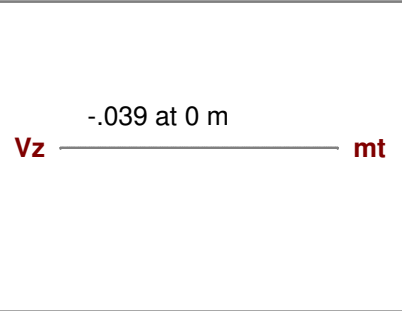
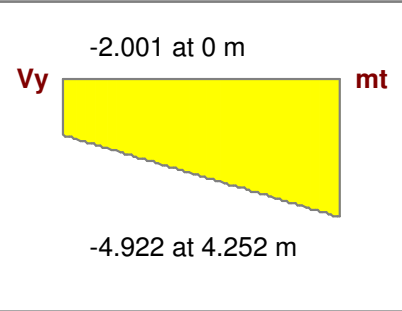
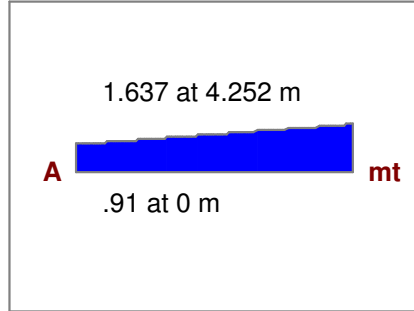
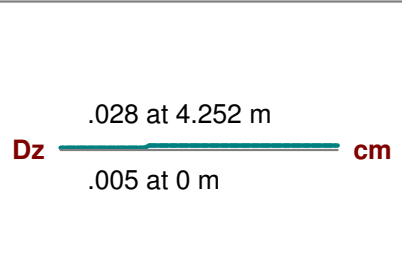
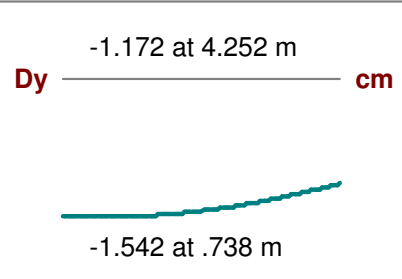
Beam: **M65**  
 Shape: **RE82.5X30**  
 Material: **GEN-CONC-H20**  
 Length: **4.252 m**  
 I Joint: **N226**  
 J Joint: **N13**  
**LC 5: PP+FY**  
 Code Check: **0.000 (bending)**  
 Report Based On 99 Sections



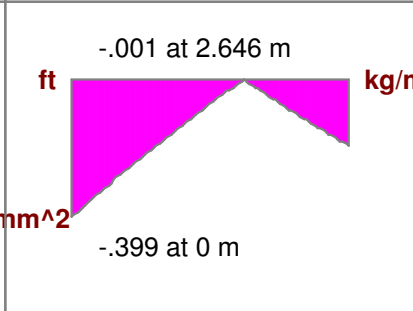
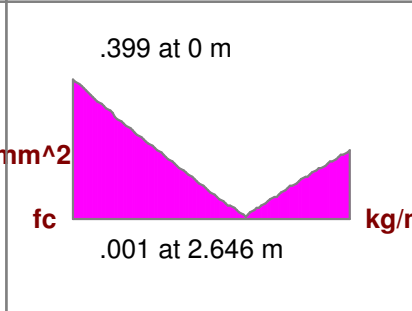
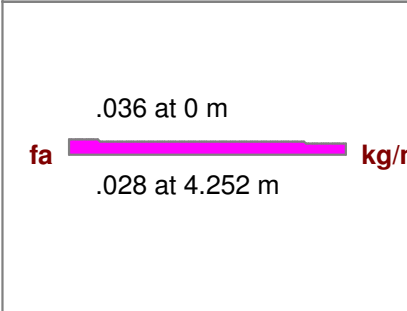
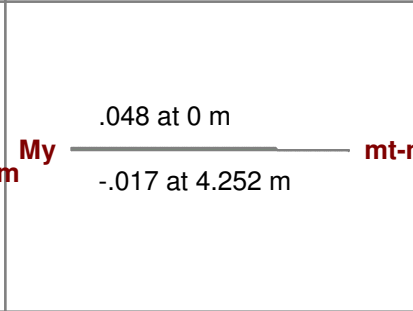
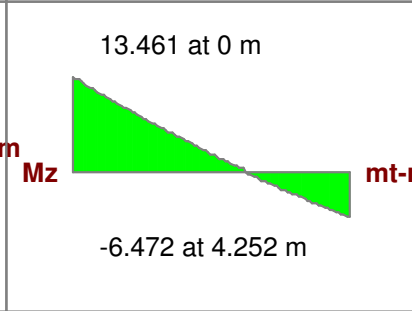
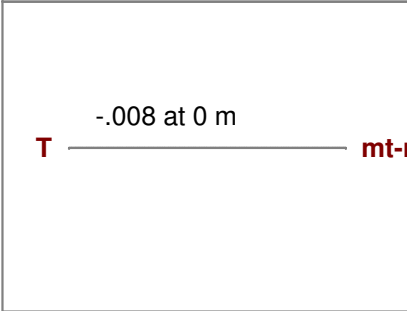
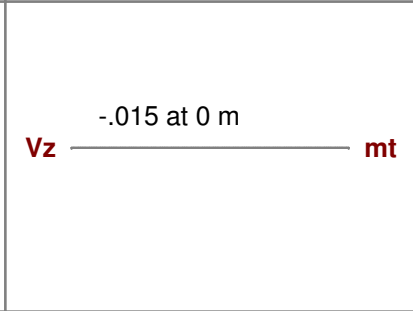
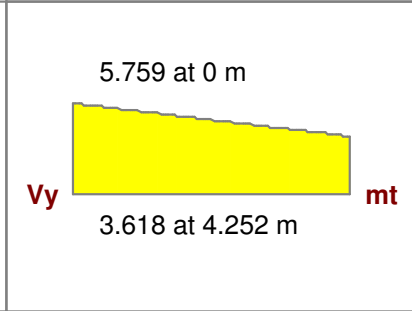
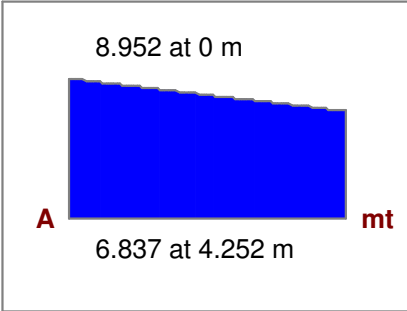
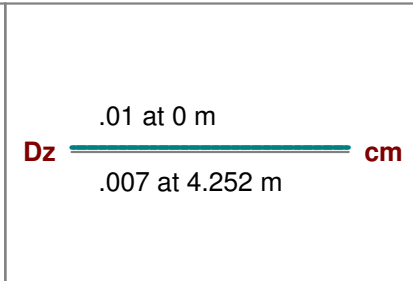
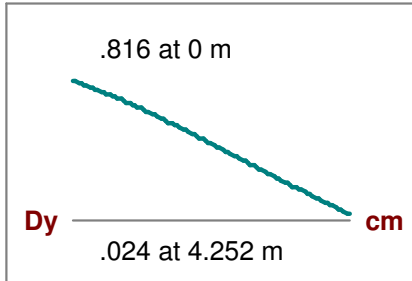
Beam: **M65**  
 Shape: **RE82.5X30**  
 Material: **GEN-CONC-H20**  
 Length: **4.252 m**  
 I Joint: **N226**  
 J Joint: **N13**  
**LC 7: PP-FY**  
 Code Check: **0.000 (bending)**  
 Report Based On 99 Sections



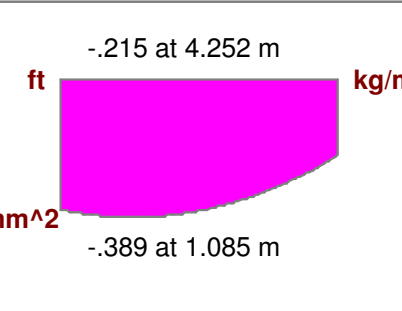
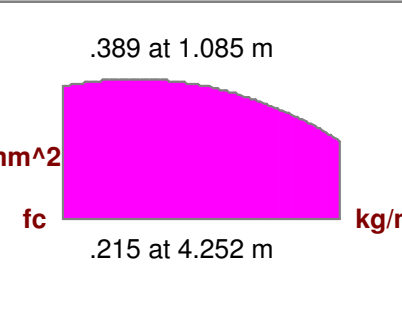
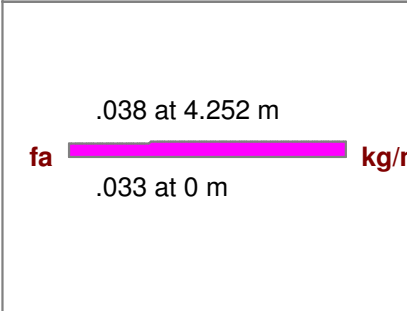
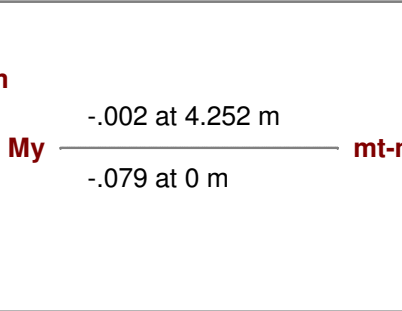
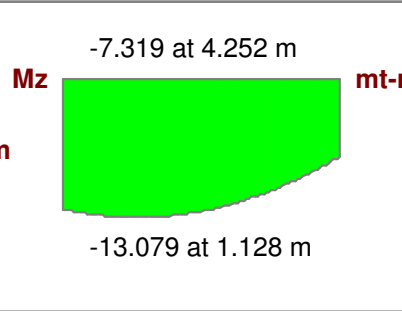
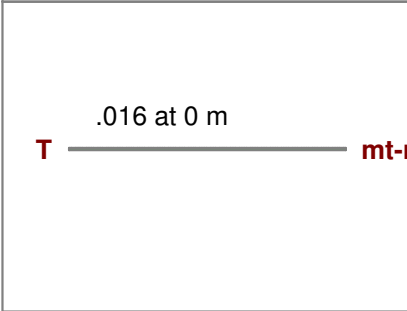
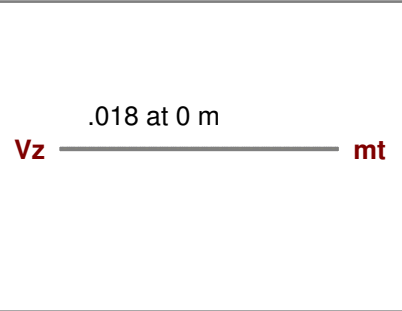
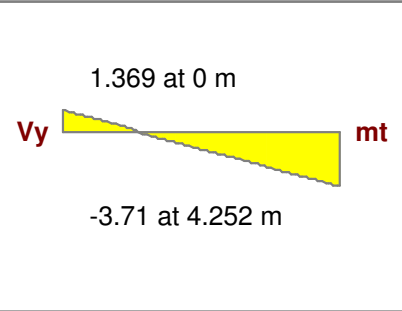
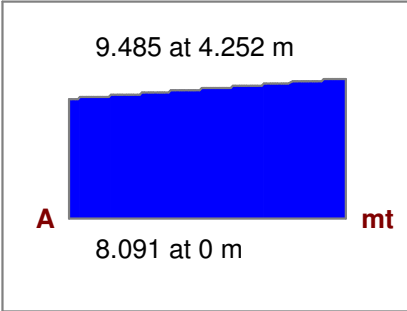
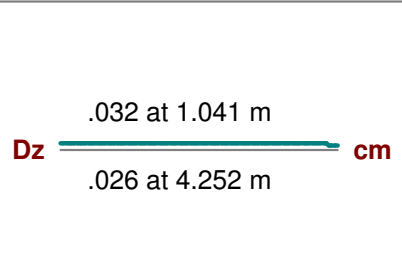
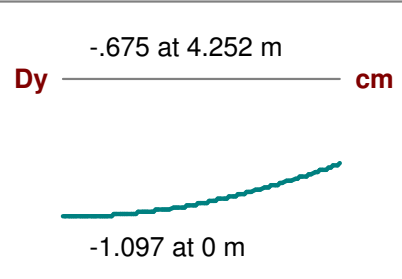
Beam: **M65**  
 Shape: **RE82.5X30**  
 Material: **GEN-CONC-H20**  
 Length: **4.252 m**  
 I Joint: **N226**  
 J Joint: **N13**  
**LC 13: 60%PP+FY**  
 Code Check: **0.000 (bending)**  
 Report Based On 99 Sections



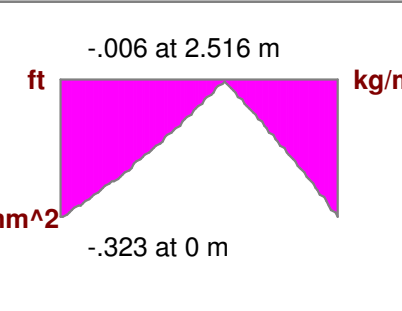
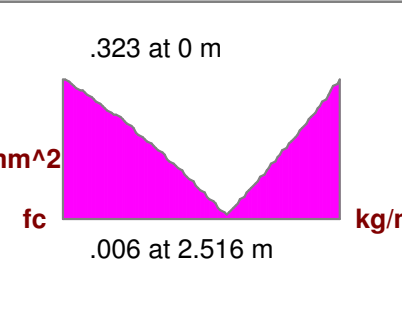
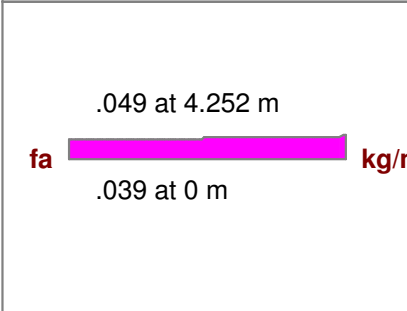
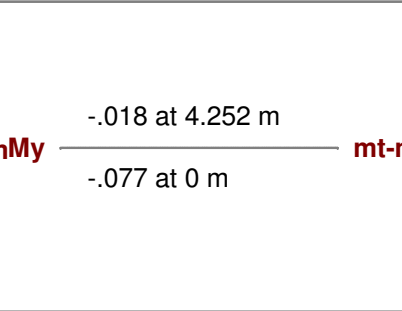
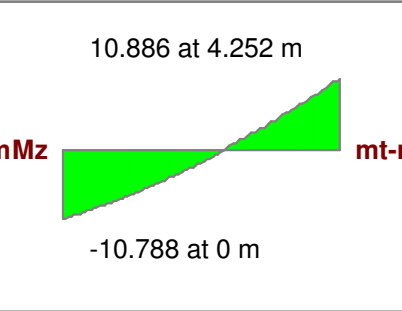
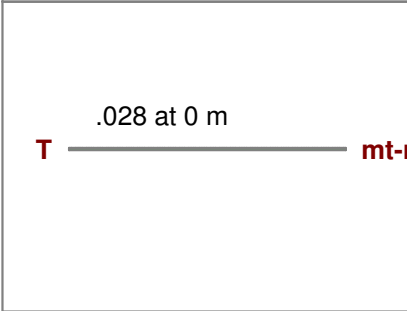
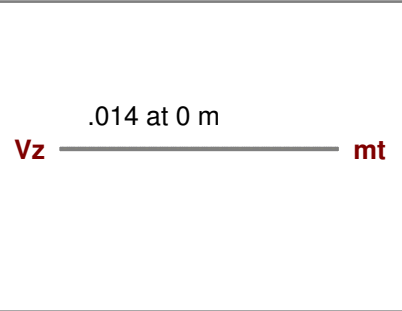
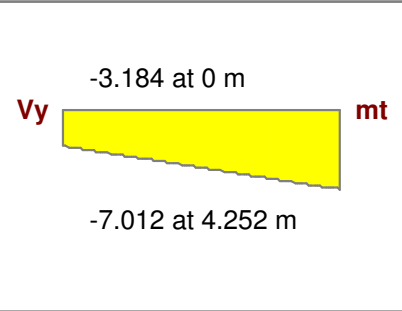
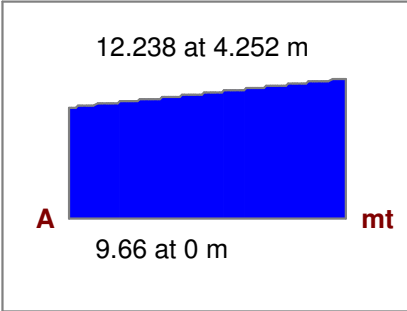
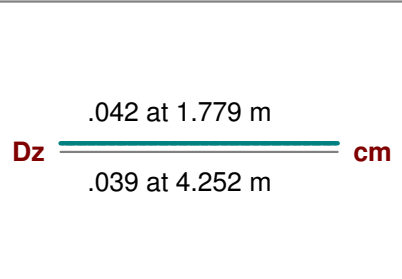
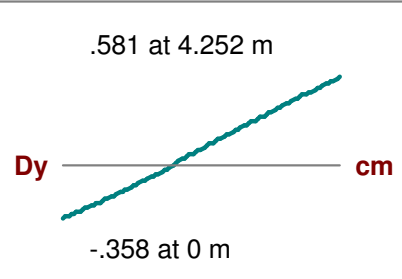
Beam: **M65**  
 Shape: **RE82.5X30**  
 Material: **GEN-CONC-H20**  
 Length: **4.252 m**  
 I Joint: **N226**  
 J Joint: **N13**  
**LC 15: 60%PP-FY**  
 Code Check: **0.000 (bending)**  
 Report Based On 99 Sections



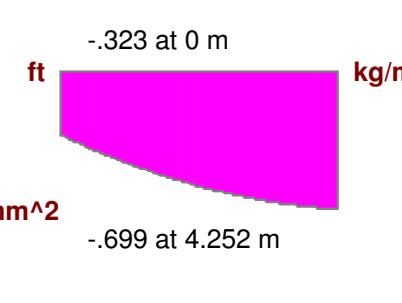
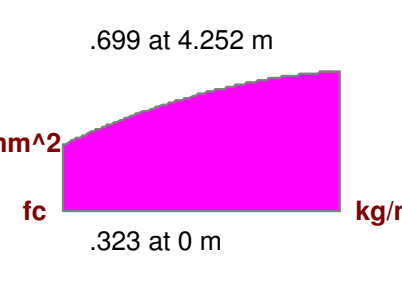
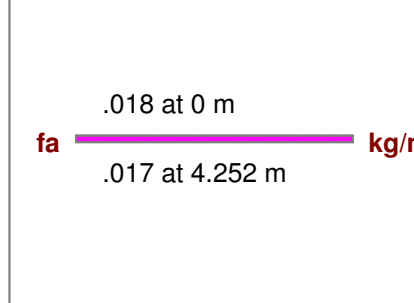
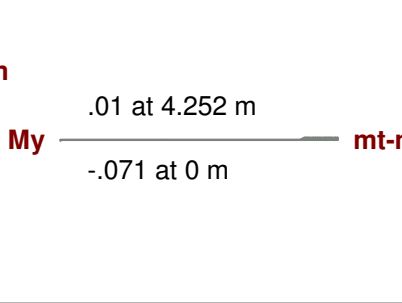
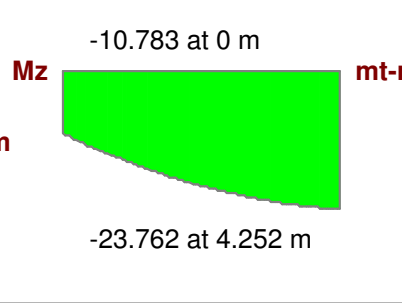
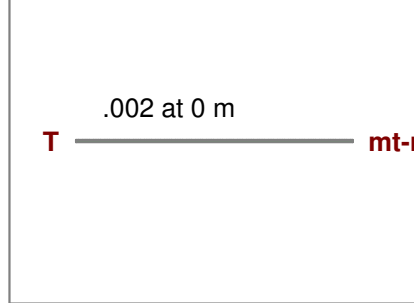
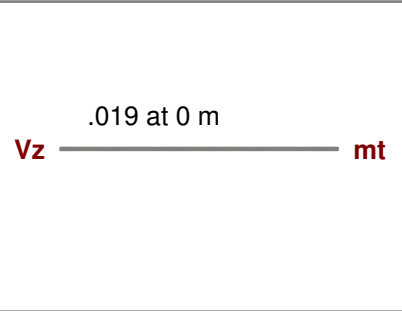
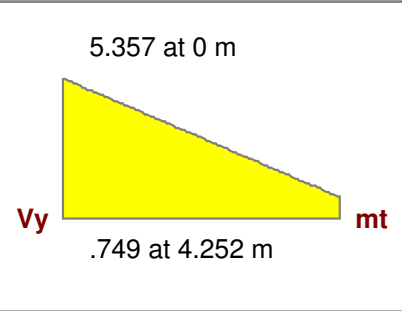
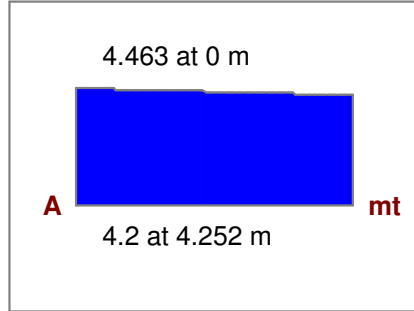
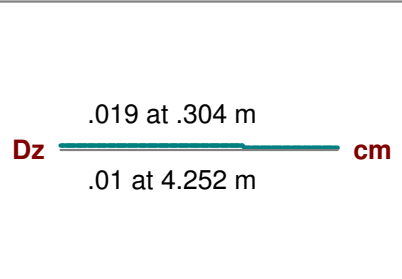
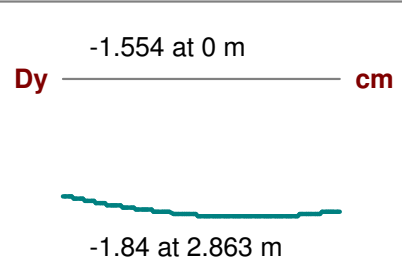
Beam: **M66**  
 Shape: **RE82.5X30**  
 Material: **GEN-CONC-H20**  
 Length: **4.252 m**  
 I Joint: **N13**  
 J Joint: **N225**  
**LC 3: PP+SC**  
 Code Check: **0.000 (bending)**  
 Report Based On 99 Sections



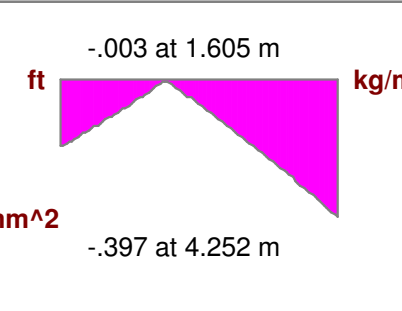
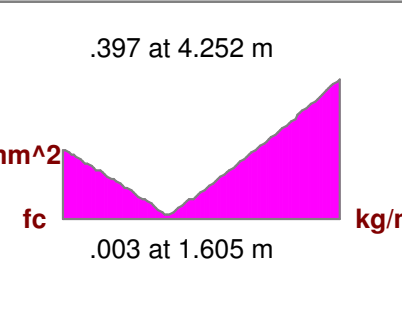
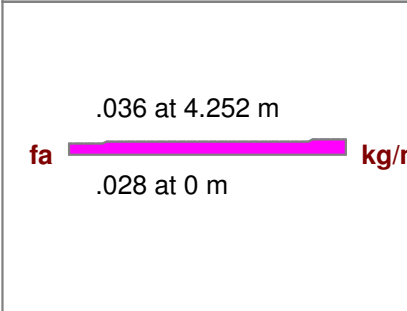
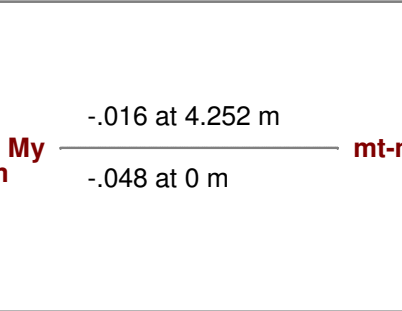
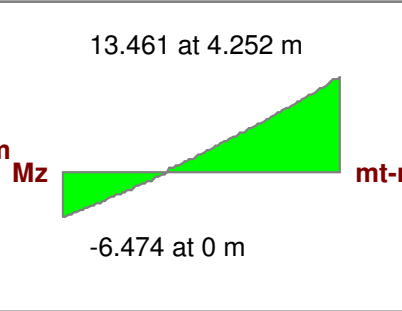
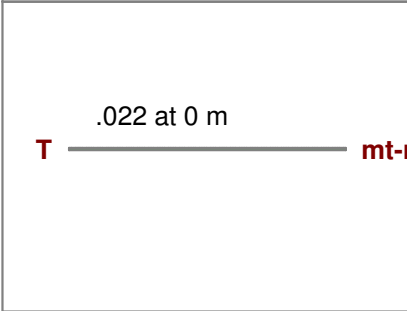
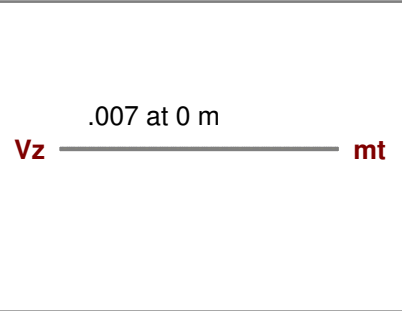
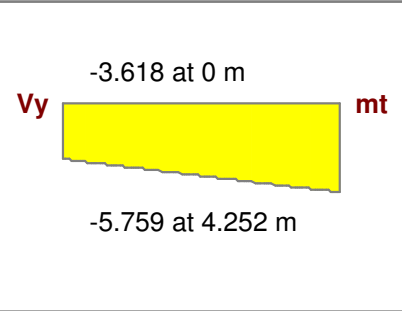
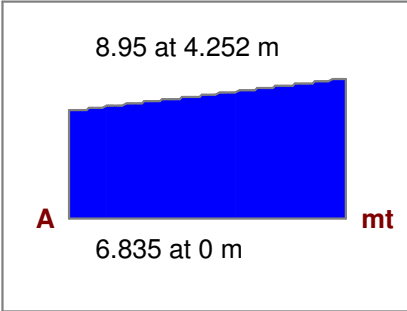
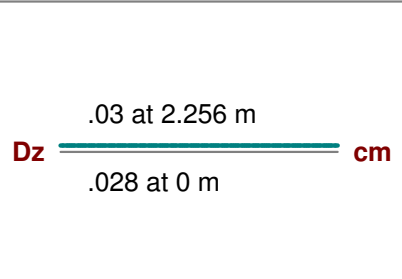
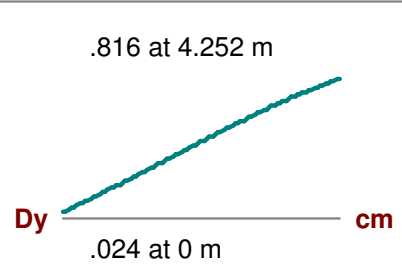
Beam: **M66**  
 Shape: **RE82.5X30**  
 Material: **GEN-CONC-H20**  
 Length: **4.252 m**  
 I Joint: **N13**  
 J Joint: **N225**  
**LC 5: PP+FY**  
 Code Check: **0.000 (bending)**  
 Report Based On 99 Sections



Beam: **M66**  
 Shape: **RE82.5X30**  
 Material: **GEN-CONC-H20**  
 Length: **4.252 m**  
 I Joint: **N13**  
 J Joint: **N225**  
**LC 7: PP-FY**  
 Code Check: **0.000 (bending)**  
 Report Based On 99 Sections

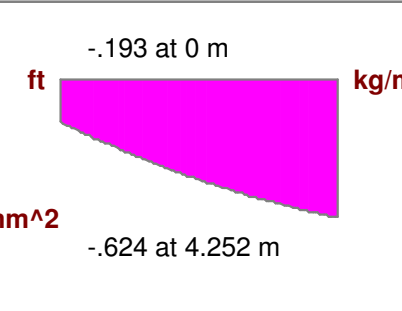
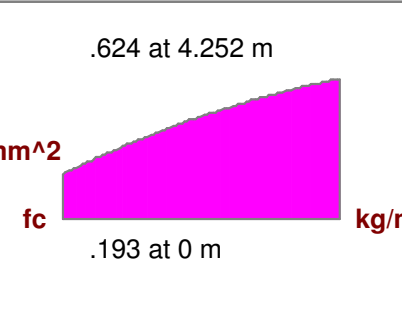
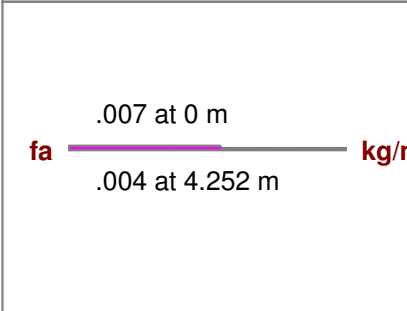
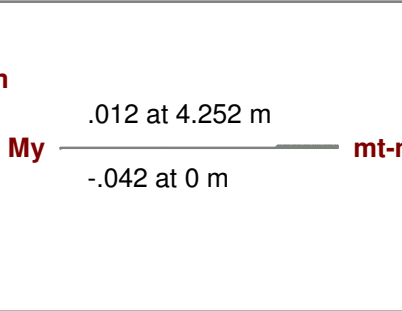
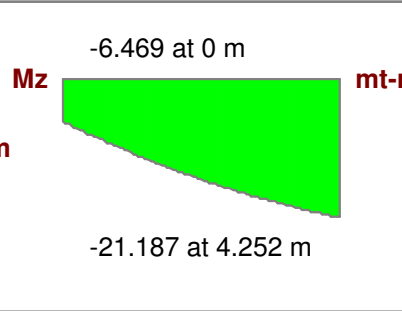
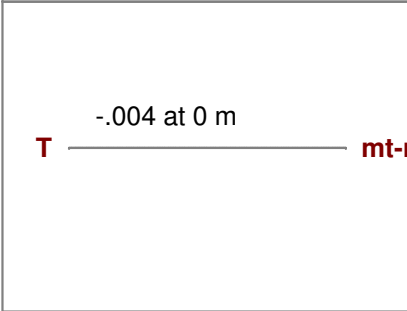
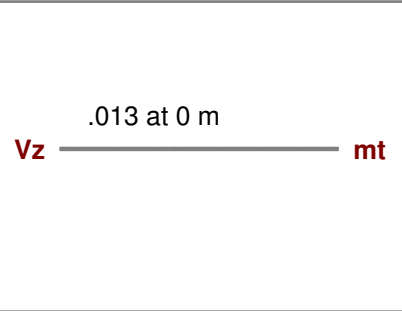
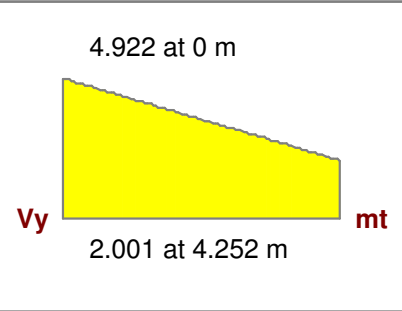
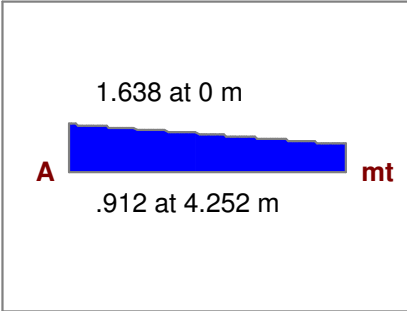
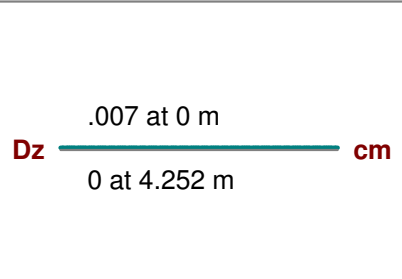
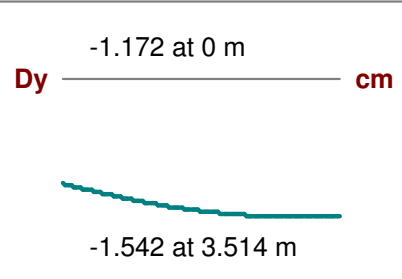


Beam: **M66**  
 Shape: **RE82.5X30**  
 Material: **GEN-CONC-H20**  
 Length: **4.252 m**  
 I Joint: **N13**  
 J Joint: **N225**  
**LC 13: 60%PP+FY**  
 Code Check: **0.000 (bending)**  
 Report Based On 99 Sections

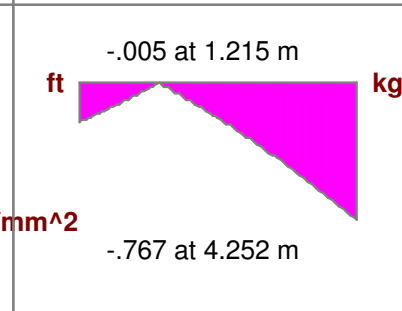
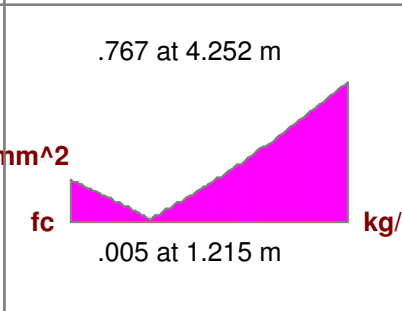
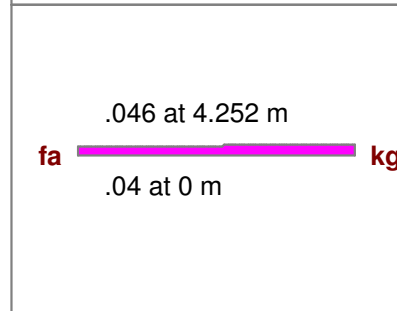
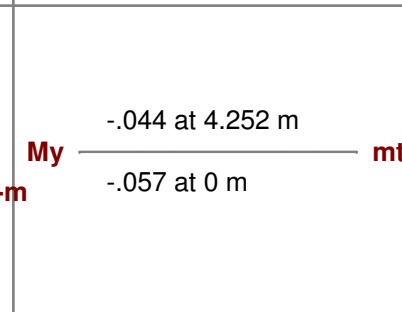
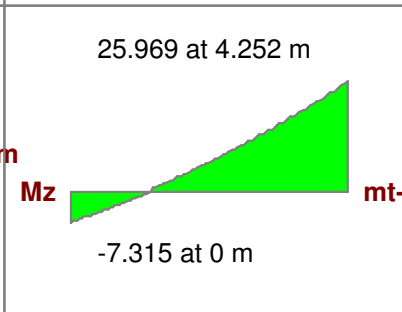
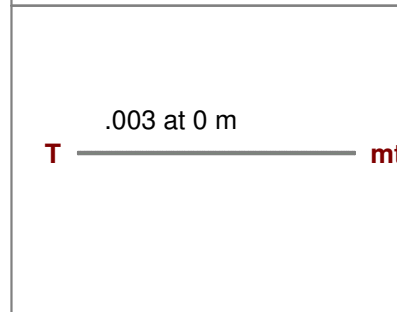
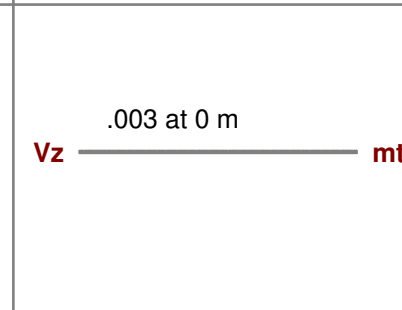
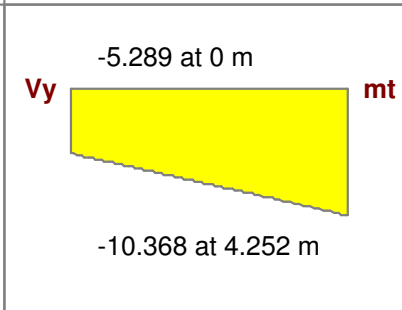
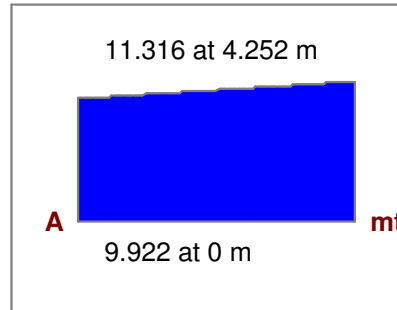
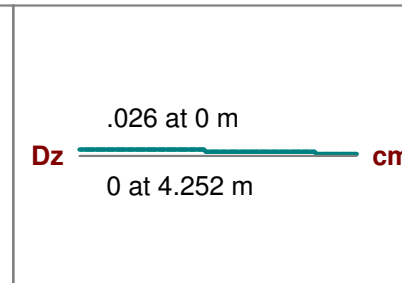
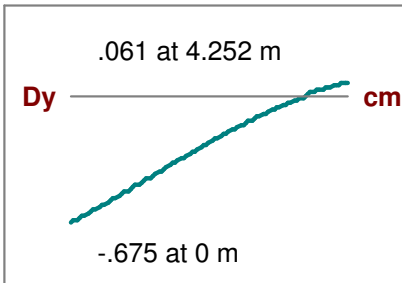




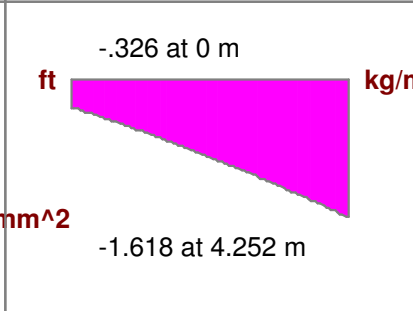
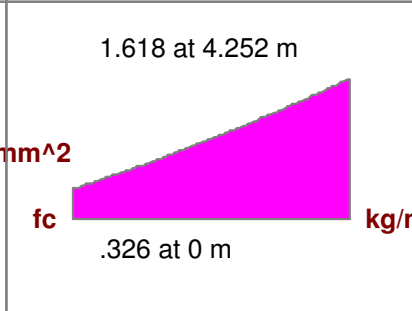
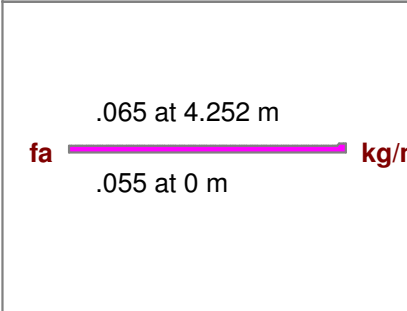
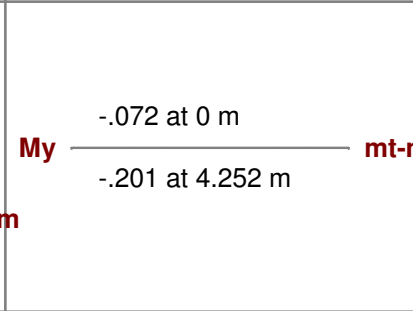
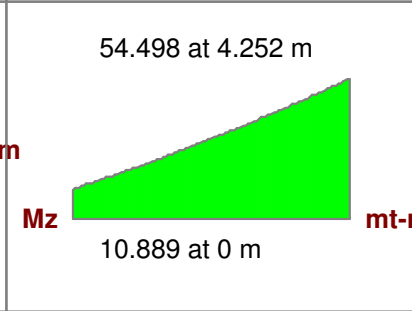
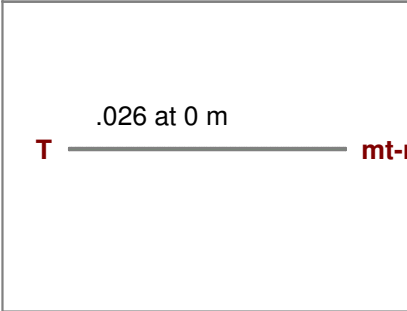
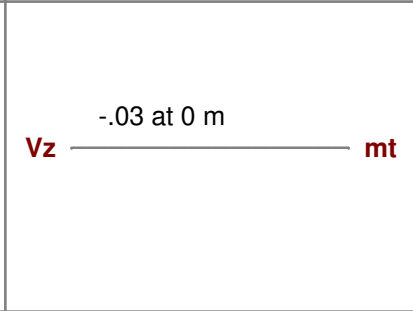
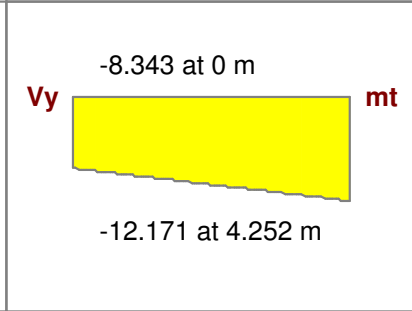
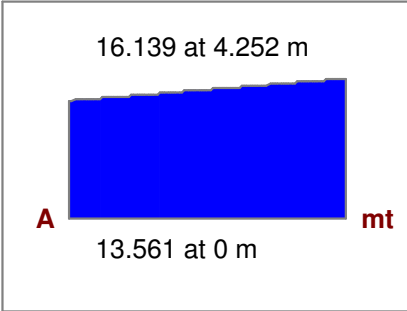
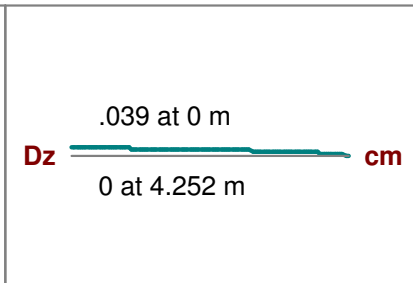
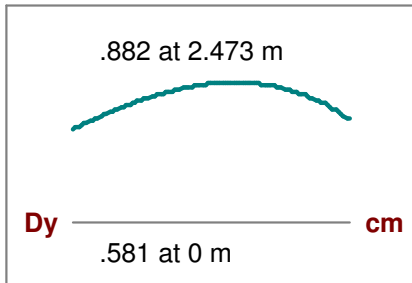
Beam: **M66**  
 Shape: **RE82.5X30**  
 Material: **GEN-CONC-H20**  
 Length: **4.252 m**  
 I Joint: **N13**  
 J Joint: **N225**  
**LC 15: 60%PP-FY**  
 Code Check: **0.000 (bending)**  
 Report Based On 99 Sections



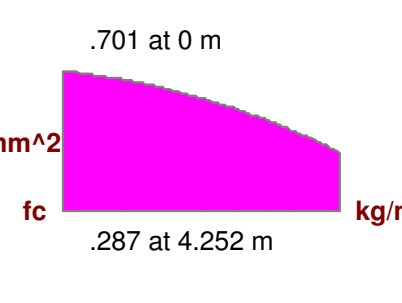
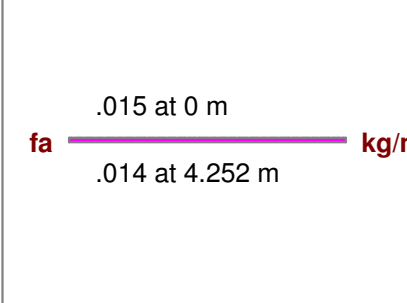
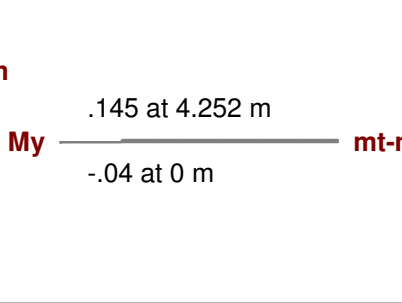
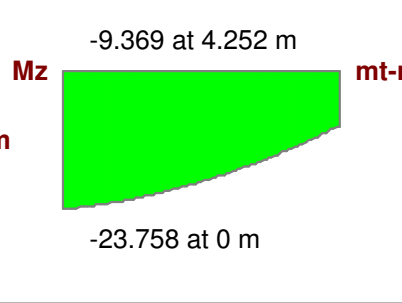
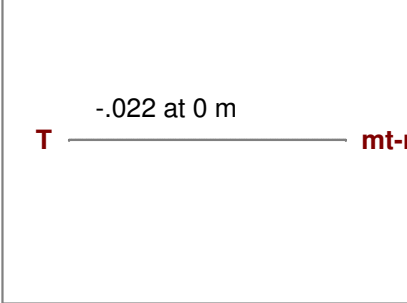
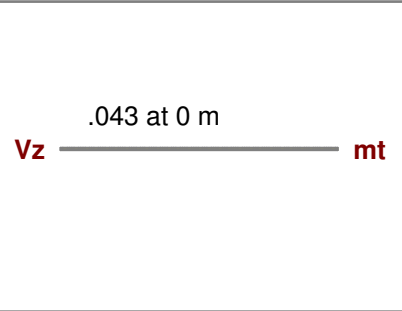
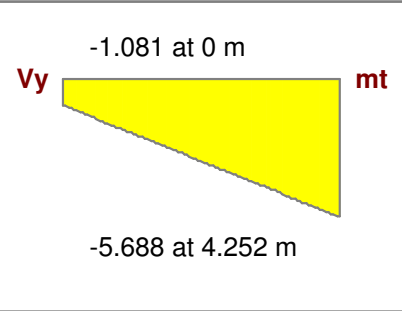
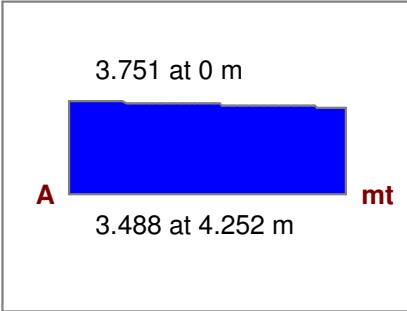
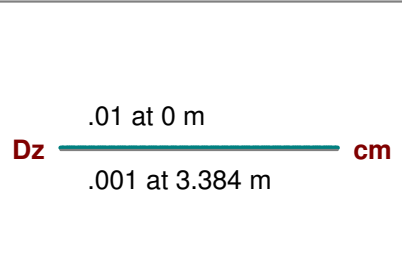
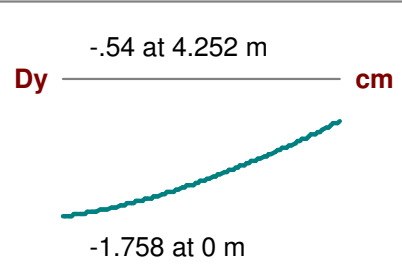
Beam: **M67**  
 Shape: **RE82.5X30**  
 Material: **GEN-CONC-H20**  
 Length: **4.252 m**  
 I Joint: **N225**  
 J Joint: **N12**  
**LC 3: PP+SC**  
 Code Check: **0.000 (bending)**  
 Report Based On 99 Sections



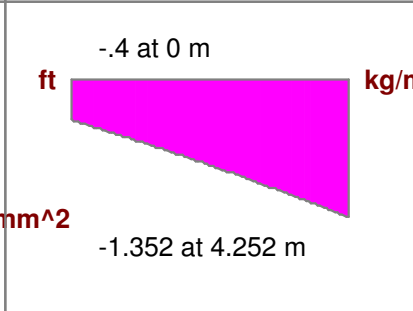
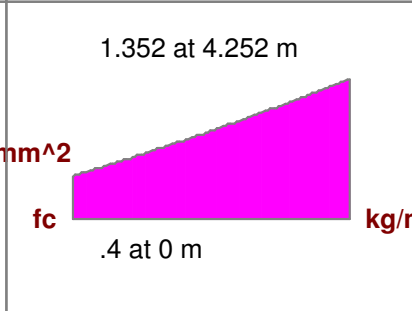
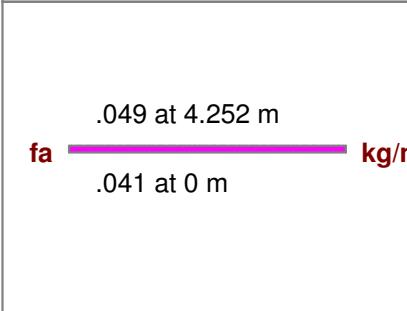
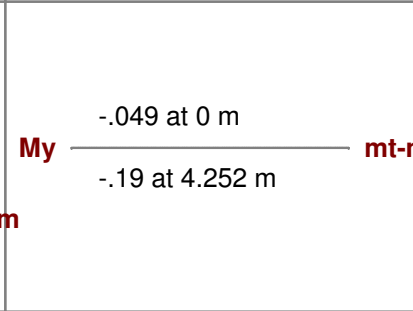
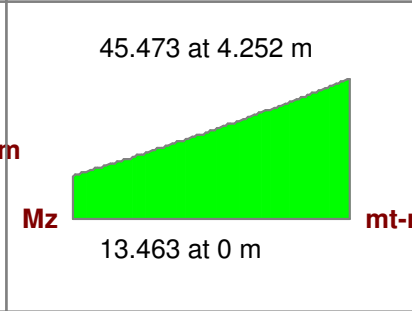
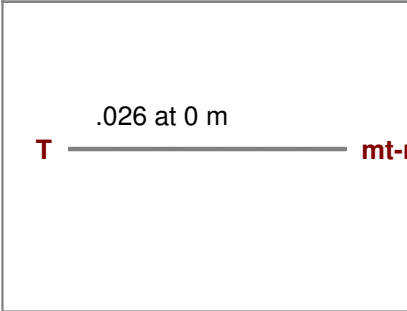
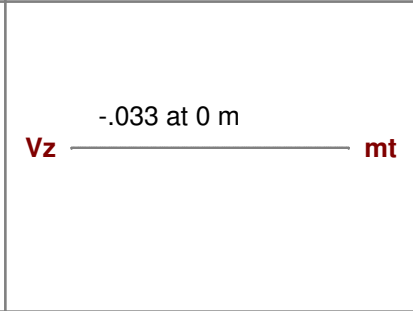
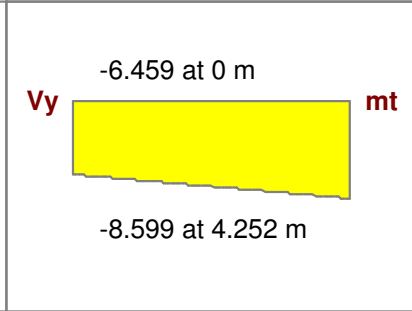
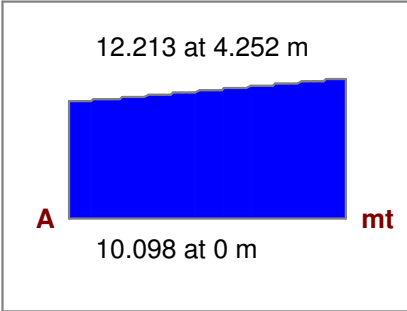
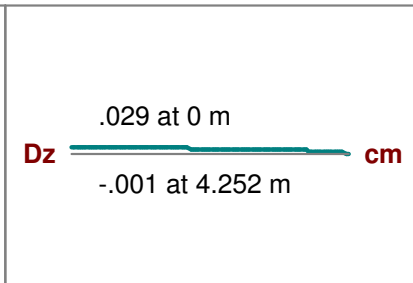
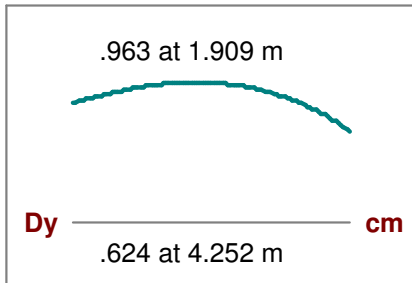
Beam: **M67**  
 Shape: **RE82.5X30**  
 Material: **GEN-CONC-H20**  
 Length: **4.252 m**  
 I Joint: **N225**  
 J Joint: **N12**  
**LC 5: PP+FY**  
 Code Check: **0.000 (bending)**  
 Report Based On 99 Sections



Beam: **M67**  
 Shape: **RE82.5X30**  
 Material: **GEN-CONC-H20**  
 Length: **4.252 m**  
 I Joint: **N225**  
 J Joint: **N12**  
**LC 7: PP-FY**  
 Code Check: **0.000 (bending)**  
 Report Based On 99 Sections



Beam: **M67**  
 Shape: **RE82.5X30**  
 Material: **GEN-CONC-H20**  
 Length: **4.252 m**  
 I Joint: **N225**  
 J Joint: **N12**  
**LC 13: 60%PP+FY**  
 Code Check: **0.000 (bending)**  
 Report Based On 99 Sections



Beam: **M67**  
 Shape: **RE82.5X30**  
 Material: **GEN-CONC-H20**  
 Length: **4.252 m**  
 I Joint: **N225**  
 J Joint: **N12**  
**LC 15: 60%PP-FY**  
 Code Check: **0.000 (bending)**  
 Report Based On 99 Sections

